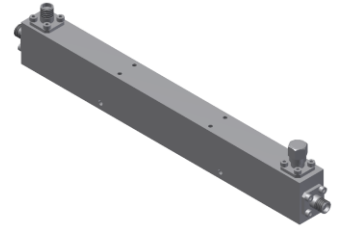


# Directional Coupler

## Model D20N003670 Rev.A

0.3-67GHz 20dB Directional Coupler, Coaxial connector



### Specifications

All specifications are subject to change without notice at any time

Frequency Range	GHz	0.3-18	18-40	40-50	50-67
Main Line VSWR	:1 (Max.)	1.6	1.7	1.8	1.9
Coupling VSWR	:1 (Max.)	1.6	1.7	1.8	1.9
Insertion Loss <sup>1</sup>	dB(Max.)	2.8	4.3	5	6.1
Coupling	dB(Max.)	20±1.7	20±1.7	20±1.7	20±1.7
Flatness	dB(Max.)	±1.8	±1.8	±1.8	±1.8
Directivity	dB(Min.)	14	10	8	7
Power <sup>2</sup>	W(Max.)	CW: 12; Peak: 1000			
Weight	g(Max.)	190	Dimension <sup>3</sup> mm (LxWxH)	178x15.4x23	
Interface	Stainless steel connector; Input: 1.85mm [F], Thru.: 1.85mm [F], Coup.: 1.85mm [F]				
Finishing	Nickel plating				
Temperature	Operating: -55~+85°C; Storage: -55~+100°C				
Environmental	Per MIL-STD-202F, Method 107D, 204D, 213B (optional, contact supplier for detail info.)				
Eng. Customized	N/A				

- Note:
1. Theoretical coupling loss included
  2. VSWR ≤ 1.2 required for CW
  3. Unless otherwise specified, Decimal tolerance: x.±1; .x±0.5; .xx±0.1

### Outline Drawing

