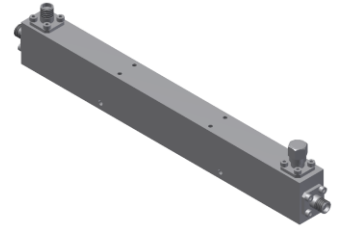


# Directional Coupler

## Model D20N003265 Rev.A

0.3-26.5GHz 20dB Directional Coupler, Coaxial connector



### Specifications

All specifications are subject to change without notice at any time

Frequency Range	GHz	0.3-8	8-18	18-26.5
Main Line VSWR	:1 (Max.)	1.3	1.4	1.5
Coupling VSWR	:1 (Max.)	1.3	1.4	1.5
Insertion Loss <sup>1</sup>	dB(Max.)	1.1	1.6	2.1
Coupling	dB(Max.)	20±0.9	20±0.9	20±0.9
Flatness	dB(Max.)	±1.3	±1.3	±1.3
Directivity	dB(Min.)	14	12	11
Power <sup>2</sup>	W(Max.)	CW: 30; Peak: 3000		
Weight	g(Max.)	190	Dimension <sup>3</sup> mm (LxWxH)	178x15.4x23.0
Interface	Stainless steel connector; Input: SMA [F], Thru.: SMA [F], Coup.: SMA [F]			
Finishing	Nickel plating			
Temperature	Operating: -55~+85°C; Storage: -55~+100°C			
Environmental	Per MIL-STD-202F, Method 107D, 204D, 213B (optional, contact supplier for detail info.)			
Eng. Customized	N/A			

- Note:
1. Theoretical coupling loss included
  2. VSWR ≤ 1.2 required for CW
  3. Unless otherwise specified, Decimal tolerance: x.±1; .x±0.5; .xx±0.1

### Outline Drawing

