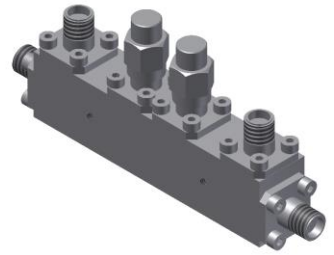


# Dual-Directional Coupler

## Model D20B060670 Rev.A

6-67GHz 20dB Dual-Directional Coupler, Coaxial connector



### Specifications

All specifications are subject to change without notice at any time

Frequency Range	GHz	6-18	18-40	40-50	50-67
Main Line VSWR	:1 (Max.)	1.7	1.8	1.9	2
Coupling VSWR	:1 (Max.)	1.7	1.8	1.9	2
Insertion Loss <sup>1</sup>	dB(Max.)	1.6	2.3	2.6	3.1
Coupling	dB(Max.)	20±1.2	20±1.2	20±1.2	20±1.2
Flatness	dB(Max.)	±1.3	±1.3	±1.3	±1.3
Directivity	dB(Min.)	14	10	8	7
Power <sup>2</sup>	W(Max.)	CW: 12; Peak: 1000			
Weight	g(Max.)	70	Dimension <sup>3</sup> mm (LxWxH)	63.5x12.7x15.9	
Interface	Stainless steel connector; Input: 1.85mm [F], Thru.: 1.85mm [F], Coup.: 1.85mm [F]				
Finishing	Nickel plating				
Temperature	Operating: -55~+85°C; Storage: -55~+100°C				
Environmental	Per MIL-STD-202F, Method 107D, 204D, 213B (optional, contact supplier for detail info.)				
Eng. Customized	N/A				

- Note:
1. Theoretical coupling loss included
  2. VSWR ≤ 1.2 required for CW
  3. Unless otherwise specified, Decimal tolerance: x.±1; .x±0.5; .xx±0.1

### Outline Drawing

