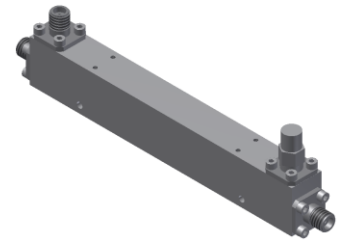


Directional Coupler

Model D16N005265 Rev.A

0.5-26.5GHz 16dB Directional Coupler, Coaxial connector



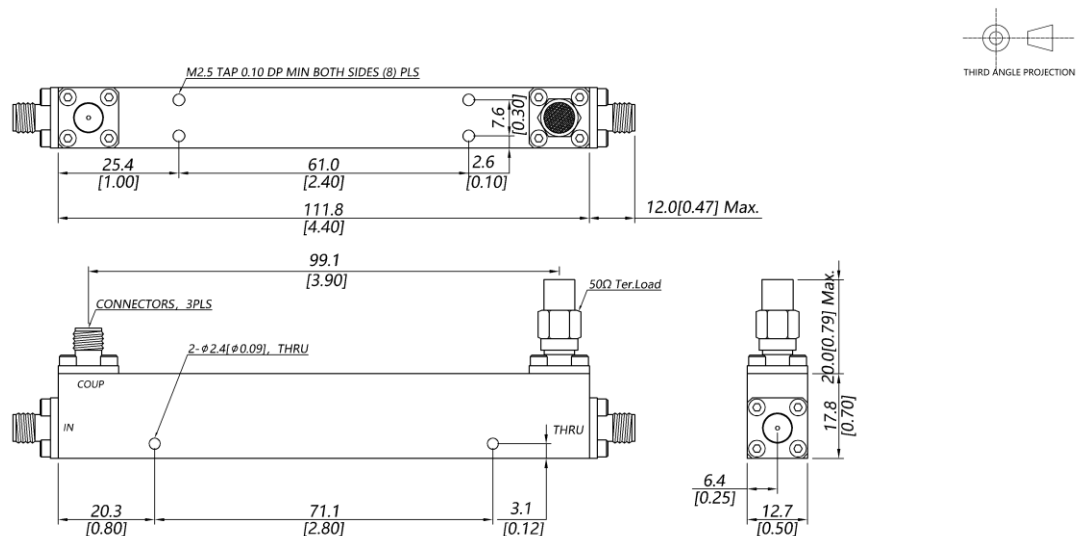
Specifications

All specifications are subject to change without notice at any time

Frequency Range	GHz	0.5-8	8-18	18-26.5
Main Line VSWR	:1 (Max.)	1.3	1.4	1.5
Coupling VSWR	:1 (Max.)	1.3	1.4	1.5
Insertion Loss ¹	dB(Max.)	1	1.4	1.7
Coupling	dB(Max.)	16±0.6	16±0.6	16±0.6
Flatness	dB(Max.)	±1	±1	±1
Directivity	dB(Min.)	16	15	14
Power ²	W(Max.)	CW: 30; Peak: 3000		
Weight	g(Max.)	90	Dimension ³ mm (LxWxH)	111.8x12.7x17.8
Interface	Stainless steel connector; Input: SMA [F], Thru.: SMA [F], Coup.: SMA [F]			
Finishing	Nickel plating			
Temperature	Operating: -55~+85°C; Storage: -55~+100°C			
Environmental	Per MIL-STD-202F, Method 107D, 204D, 213B (optional, contact supplier for detail info.)			
Eng. Customized	N/A			

- Note:
1. Theoretical 0.11dB Included
 2. VSWR ≤1.2 required for CW
 3. Unless otherwise specified, Decimal tolerance: x.±1; .x±0.5; .xx±0.1

Outline Drawing



Directional Coupler

Model D16N005265 Rev.A

0.5-26.5GHz 16dB Directional Coupler, Coaxial connector

Typical Graph

Typical test temperature @25°C

