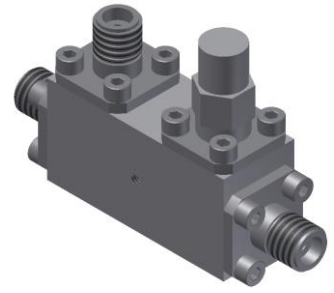


# Directional Coupler

## Model D13N060500 Rev.A

6-50GHz 13dB Directional Coupler, Coaxial connector



### Specifications

All specifications are subject to change without notice at any time

Frequency Range	GHz	6-18	18-40	40-50
Main Line VSWR	:1 (Max.)	1.6	1.7	1.8
Coupling VSWR	:1 (Max.)	1.6	1.7	1.8
Insertion Loss <sup>1</sup>	dB(Max.)	1.1	1.5	1.7
Coupling	dB(Max.)	13±0.8	13±0.8	13±0.8
Flatness	dB(Max.)	±0.8	±0.8	±0.8
Directivity	dB(Min.)	14	10	8
Power <sup>2</sup>	W(Max.)	CW: 20; Peak: 1000		
Weight	g(Max.)	40	Dimension <sup>3</sup> mm (LxWxH)	31.8x12.7x15.9
Interface	Stainless steel connector; Input: 2.4mm [F], Thru.: 2.4mm [F], Coup.: 2.4mm [F]			
Finishing	Nickel plating			
Temperature	Operating: -55~+85°C; Storage: -55~+100°C			
Environmental	Per MIL-STD-202F, Method 107D, 204D, 213B (optional, contact supplier for detail info.)			
Eng. Customized	N/A			

- Note:
1. Theoretical 0.22dB Included
  2. VSWR ≤1.2 required for CW
  3. Unless otherwise specified, Decimal tolerance: x.±1; .x±0.5; .xx±0.1

### Outline Drawing

