

Directional Coupler

Model D13N010670 Rev.A

1-67GHz 13dB Directional Coupler, Coaxial connector



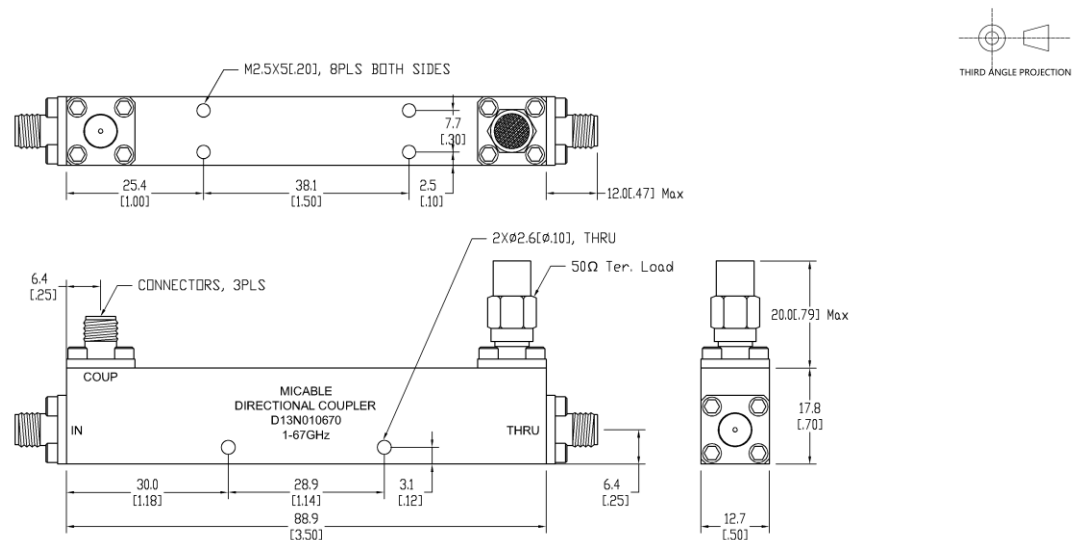
Specifications

All specifications are subject to change without notice at any time

Frequency Range	GHz	1-18	18-40	40-50	50-67
Main Line VSWR	:1 (Max.)	1.6	1.7	1.8	1.9
Coupling VSWR	:1 (Max.)	1.6	1.7	1.8	1.9
Insertion Loss ¹	dB(Max.)	1.7	2.6	2.9	3.7
Coupling	dB(Max.)	13±1.5	13±1.5	13±1.5	13±1.5
Flatness	dB(Max.)	±1.5	±1.5	±1.5	±1.5
Directivity	dB(Min.)	14	10	8	7
Power ²	W(Max.)	CW: 12; Peak: 1000			
Weight	g(Max.)	75	Dimension ³ mm (LxWxH)	88.9x12.7x17.8	
Interface	Main line: 1.85mm [F], Coup.: 1.85mm [F]; Stainless steel connector, Per IEC 61169				
Finishing	Nickel plating, Per QQ-N-290				
Temperature	Operating: -55~+85°C; Storage: -55~+100°C				
Environmental	Optional: Per MIL-STD-202F (contact supplier for detail info.)				
Eng. Customized	N/A				

- Note:
- Theoretical 0.22dB Included
 - VSWR ≤ 1.2 required for CW
 - Unless otherwise specified, Decimal tolerance: x.±1; .x±0.5; .xx±0.1

Outline Drawing



Directional Coupler

Model D13N010670 Rev.A

1-67GHz 13dB Directional Coupler, Coaxial connector

Typical Graph

@Ambient Temperature

