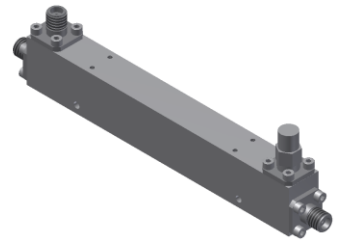


Directional Coupler

Model D13N005670 Rev.A

0.5-67GHz 13dB Directional Coupler, Coaxial connector



Specifications

All specifications are subject to change without notice at any time

Frequency Range	GHz	0.5-18	18-40	40-50	50-67
Main Line VSWR	:1 (Max.)	1.6	1.7	1.8	1.9
Coupling VSWR	:1 (Max.)	1.6	1.7	1.8	1.9
Insertion Loss ¹	dB(Max.)	1.9	2.9	3.4	4.3
Coupling	dB(Max.)	13±1.6	13±1.6	13±1.6	13±1.6
Flatness	dB(Max.)	±1.7	±1.7	±1.7	±1.7
Directivity	dB(Min.)	14	10	8	7
Power ²	W(Max.)	CW: 12; Peak: 1000			
Weight	g(Max.)	90	Dimension ³ mm (LxWxH)	111.8x12.7x17.8	
Interface	Stainless steel connector; Input: 1.85mm [F], Thru.: 1.85mm [F], Coup.: 1.85mm [F]				
Finishing	Nickel plating				
Temperature	Operating: -55~+85°C; Storage: -55~+100°C				
Environmental	Per MIL-STD-202F, Method 107D, 204D, 213B (optional, contact supplier for detail info.)				
Eng. Customized	N/A				

- Note:
1. Theoretical 0.22dB Included
 2. VSWR ≤1.2 required for CW
 3. Unless otherwise specified, Decimal tolerance: x±1; .x±0.5; .xx±0.1

Outline Drawing

