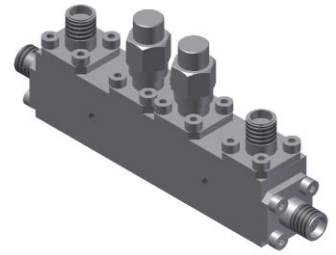


Dual-Directional Coupler

Model D10B265500 Rev.A

26.5-50GHz 10dB Dual-Directional Coupler, Coaxial connector



Specifications

All specifications are subject to change without notice at any time

Frequency Range	GHz	26.5-40	40-50
Main Line VSWR	:1 (Max.)	1.7	1.8
Coupling VSWR	:1 (Max.)	1.7	1.8
Insertion Loss ¹	dB(Max.)	2.9	3.2
Coupling	dB(Max.)	10±0.8	10±0.8
Flatness	dB(Max.)	±0.8	±0.8
Directivity	dB(Min.)	11	9
Power ²	W(Max.)	CW: 20; Peak: 1000	
Weight	g(Max.)	70	Dimension ³ mm (LxWxH) 63.5x12.7x15.9
Interface	Stainless steel connector; Input: 2.4mm [F], Thru.: 2.4mm [F], Coup.: 2.4mm [F]		
Finishing	Nickel plating		
Temperature	Operating: -55~+85°C; Storage: -55~+100°C		
Environmental	Per MIL-STD-202F, Method 107D, 204D, 213B (optional, contact supplier for detail info.)		
Eng. Customized	N/A		

- Note:
1. Theoretical 0.92dB Included
 2. VSWR ≤1.2 required for CW
 3. Unless otherwise specified, Decimal tolerance: x.±1; .x±0.5; .xx±0.1

Outline Drawing

