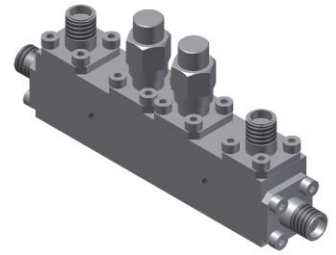


Dual-Directional Coupler

Model D10B180265 Rev.A

18-26.5GHz 10dB Dual-Directional Coupler, Coaxial connector



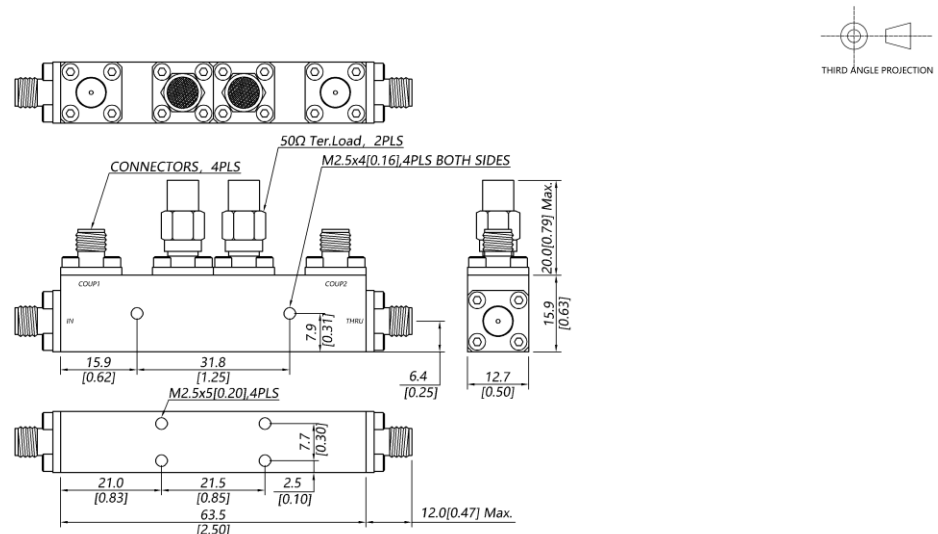
Specifications

All specifications are subject to change without notice at any time

| | | | |
|-----------------------------|---|--------------------|--|
| Frequency Range | GHz | 18-26.5 | |
| Main Line VSWR | :1 (Max.) | 1.6 | |
| Coupling VSWR | :1 (Max.) | 1.6 | |
| Insertion Loss ¹ | dB(Max.) | 2.3 | |
| Coupling | dB(Max.) | 10±0.5 | |
| Flatness | dB(Max.) | ±0.5 | |
| Directivity | dB(Min.) | 14 | |
| Power ² | W(Max.) | CW: 30; Peak: 3000 | |
| Weight | g(Max.) | 70 | Dimension ³ mm (LxWxH) 63.5x12.7x15.9 |
| Interface | Stainless steel connector; Input: SMA [F], Thru.: SMA [F], Coup.: SMA [F] | | |
| Finishing | Nickel plating | | |
| Temperature | Operating: -55~+85°C; Storage: -55~+100°C | | |
| Environmental | Per MIL-STD-202F, Method 107D, 204D, 213B (optional, contact supplier for detail info.) | | |
| Eng. Customized | N/A | | |

- Note:
1. Theoretical 0.92dB Included
 2. VSWR ≤1.2 required for CW
 3. Unless otherwise specified, Decimal tolerance: x.±1; .x±0.5; .xx±0.1

Outline Drawing



Dual-Directional Coupler

Model D10B180265 Rev.A

18-26.5GHz 10dB Dual-Directional Coupler, Coaxial connector

Typical Graph

Typical test temperature @25°C

