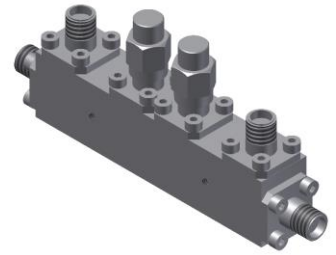


Dual-Directional Coupler

Model D10B060670 Rev.A

6-67GHz 10dB Dual-Directional Coupler, Coaxial connector



Specifications

All specifications are subject to change without notice at any time

Frequency Range	GHz	6-18	18-40	40-50	50-67
Main Line VSWR	:1 (Max.)	1.7	1.8	1.9	2
Coupling VSWR	:1 (Max.)	1.7	1.8	1.9	2
Insertion Loss ¹	dB(Max.)	2.2	2.9	3.2	3.7
Coupling	dB(Max.)	10±1.2	10±1.2	10±1.2	10±1.2
Flatness	dB(Max.)	±1.2	±1.2	±1.2	±1.2
Directivity	dB(Min.)	15	11	9	8
Power ²	W(Max.)	CW: 12; Peak: 1000			
Weight	g(Max.)	70	Dimension ³ mm (LxWxH)	63.5x12.7x15.9	
Interface	Stainless steel connector; Input: 1.85mm [F], Thru.: 1.85mm [F], Coup.: 1.85mm [F]				
Finishing	Nickel plating				
Temperature	Operating: -55~+85°C; Storage: -55~+100°C				
Environmental	Per MIL-STD-202F, Method 107D, 204D, 213B (optional, contact supplier for detail info.)				
Eng. Customized	N/A				

- Note:
1. Theoretical 0.92dB Included
 2. VSWR ≤1.2 required for CW
 3. Unless otherwise specified, Decimal tolerance: x.±1; .x±0.5; .xx±0.1

Outline Drawing

