

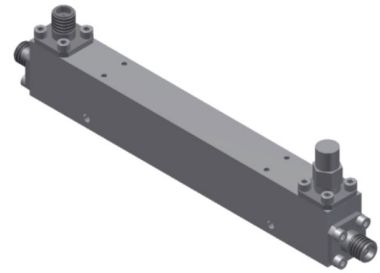
Directional Coupler For Specific Application

Model - SA-06-74

Rev. - A

10dB Directional Coupler For Specific Application;
Main Line (Through) Working Freq. Range: 9K ~ 26.5GHz;
Coupling Working Freq. Range: 0.6 ~ 26.5GHz;

Due to the limitation of VNA testing range, the Data starts from 10MHz;



All specifications are subject to change without notice at any time

Electrical & Mechanical Specifications

9K-26.5GHz: DC thru;
FR1: 9K-5GHz; FR2: 0.6-5GHz; FR3: 5-26.5GHz; FR4: 0.6-26.5GHz;
FR1: Main Line VSWR ≤ 1.3 , Insertion Loss(0.46dB coupling loss included) ≤ 1.2 dB;
FR2: Coupling VSWR ≤ 1.3 , Directivity ≥ 18 dB;
FR3: Main Line VSWR ≤ 1.5 , Coupling VSWR ≤ 1.5 , Insertion Loss(0.46dB coupling loss included) ≤ 2.2 dB;
Directivity ≥ 10 dB;
FR4: Coupling $\leq 10 \pm 0.7$ dB, Flatness $\leq \pm 1$ dB;
CW Power(Max.): 30W;
Dimension: 111.8L \times 12.7W \times 17.8H (mm);
Weight(Max.): 90g;
Connector Type: SMA[F]; I.A.W. IEC 61169;
Surface Coating: Nickel plating, I.A.W ISO 4527;
Operating Temp.: -55~+85°C;
Storage Temp.: -55~+100°C;
Shock, Vibration, Thermal Shock Per MIL-STD-202F, Method 213B, 204D and 107D;

Note3- Unit: mm , Unless otherwise specified, .x ± 1.0 .xx ± 0.50 Holes: ± 0.3

2D Outline Drawing

