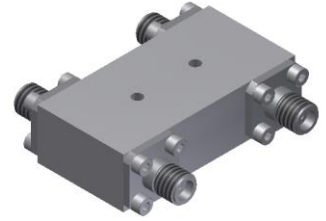


4-Port 90° Hybrid Coupler

Model QN180265 Rev.B

18-26.5GHz 4-Port 3dB 90° Hybrid, Coaxial connector



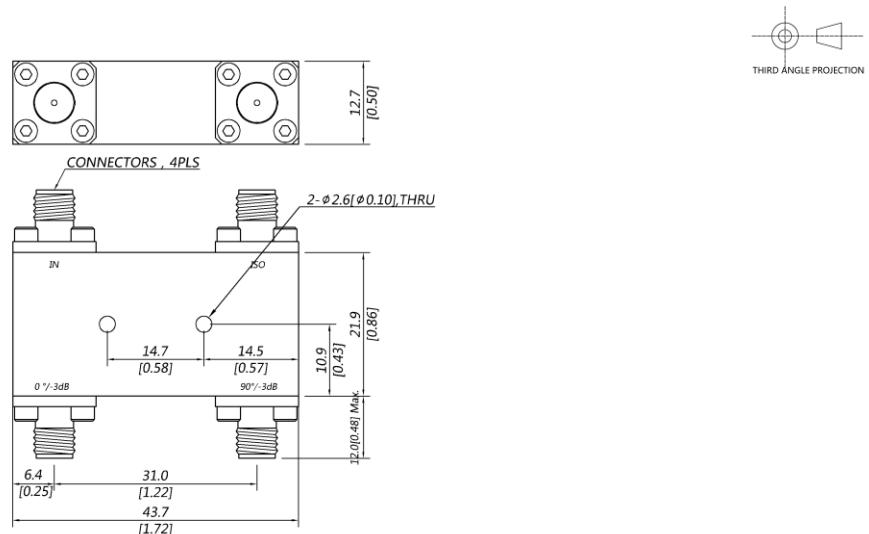
Specifications

All specifications are subject to change without notice at any time

Frequency Range	GHz	18-26.5	
Nom. Phase	Deg. (Typ.)	90	
Ports VSWR	:1 (Max.)	1.6	
Insertion Loss ¹	dB(Max.)	1.7	
Amp. Unbalance	dB(Max.)	±0.6	
Phase Unbalance	Deg. (Max.)	±8	
Isolation	dB(Min.)	15	
Power ²	W(Max.)	CW: 30; Peak: 3000	
Weight	g(Max.)	55	Dimension ³ mm (LxWxH) 21.9x43.7x12.7
Interface	Stainless steel connector; Input: SMA [F], Output: SMA [F]		
Finishing	Nickel plating		
Temperature	Operating: -55~+85°C; Storage: -55~+100°C		
Environmental	Per MIL-STD-202F, Method 107D, 204D, 213B (optional, contact supplier for detail info.)		
Eng. Customized	N/A		

- Note:
- Above Theoretical Loss 3dB
 - VSWR ≤ 1.2 required for CW
 - Unless otherwise specified, Decimal tolerance: x±1; .x±0.5; .xx±0.1

Outline Drawing



4-Port 90° Hybrid Coupler

Model QN180265 Rev.B

18-26.5GHz 4-Port 3dB 90° Hybrid, Coaxial connector

Typical Graph

Typical test temperature @25°C

