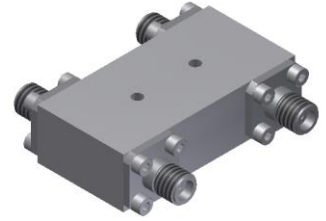


4-Port 90° Hybrid Coupler

Model QN060400 Rev.B

6-40GHz 4-Port 3dB 90° Hybrid, Coaxial connector



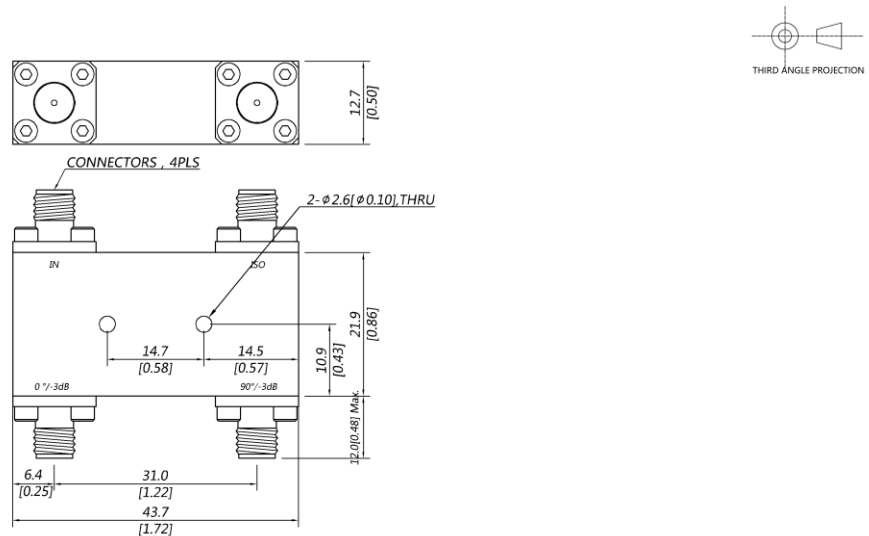
Specifications

All specifications are subject to change without notice at any time

Frequency Range	GHz	6-18	18-26.5	26.5-40
Nom. Phase	Deg. (Typ.)	90	90	90
Ports VSWR	:1 (Max.)	1.6	1.7	1.8
Insertion Loss ¹	dB(Max.)	1.5	1.8	2
Amp. Unbalance	dB(Max.)	±1.2	±1.2	±1.2
Phase Unbalance	Deg. (Max.)	±10	±10	±10
Isolation	dB(Min.)	17	15	14
Power ²	W(Max.)	CW: 20; Peak: 3000		
Weight	g(Max.)	55	Dimension ³ mm (LxWxH)	21.9x43.7x12.7
Interface	Stainless steel connector; Input: 2.92mm [F], Output: 2.92mm [F]			
Finishing	Nickel plating			
Temperature	Operating: -55~+85°C; Storage: -55~+100°C			
Environmental	Per MIL-STD-202F, Method 107D, 204D, 213B (optional, contact supplier for detail info.)			
Eng. Customized	N/A			

- Note:
- Above Theoretical Loss 3dB
 - VSWR ≤ 1.2 required for CW
 - Unless otherwise specified, Decimal tolerance: x±1; .x±0.5; .xx±0.1

Outline Drawing



4-Port 90° Hybrid Coupler

Model QN060400 Rev.B

6-40GHz 4-Port 3dB 90° Hybrid, Coaxial connector

Typical Graph

Typical test temperature @25°C

