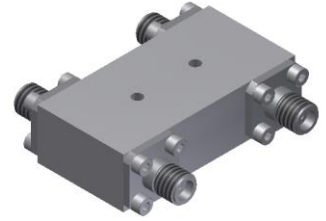


# 4-Port 90° Hybrid Coupler

## Model QN060265 Rev.B

6-26.5GHz 4-Port 3dB 90° Hybrid, Coaxial connector



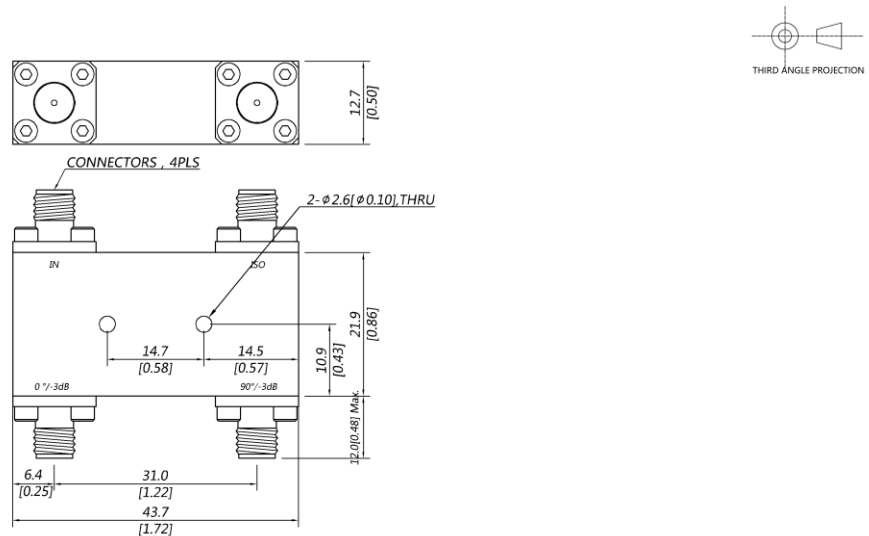
### Specifications

All specifications are subject to change without notice at any time

Frequency Range	GHz	6-18	18-26.5
Nom. Phase	Deg. (Typ.)	90	90
Ports VSWR	:1 (Max.)	1.5	1.6
Insertion Loss <sup>1</sup>	dB(Max.)	1.4	1.8
Amp. Unbalance	dB(Max.)	±0.7	±0.7
Phase Unbalance	Deg. (Max.)	±8	±8
Isolation	dB(Min.)	17	15
Power <sup>2</sup>	W(Max.)	CW: 30; Peak: 3000	
Weight	g(Max.)	55	Dimension <sup>3</sup> mm (LxWxH) 21.9x43.7x12.7
Interface	Stainless steel connector; Input: SMA [F], Output: SMA [F]		
Finishing	Nickel plating		
Temperature	Operating: -55~+85°C; Storage: -55~+100°C		
Environmental	Per MIL-STD-202F, Method 107D, 204D, 213B (optional, contact supplier for detail info.)		
Eng. Customized	N/A		

- Note:
1. Above Theoretical Loss 3dB
  2. VSWR ≤ 1.2 required for CW
  3. Unless otherwise specified, Decimal tolerance: x±1; .x±0.5; .xx±0.1

### Outline Drawing



# 4-Port 90° Hybrid Coupler

## Model QN060265 Rev.B

6-26.5GHz 4-Port 3dB 90° Hybrid, Coaxial connector

### Typical Graph

Typical test temperature @25°C

