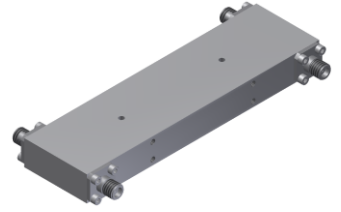


# 4-Port 90° Hybrid Coupler

## Model QN010180 Rev.B

1-18GHz 4-Port 3dB 90° Hybrid, Coaxial connector



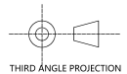
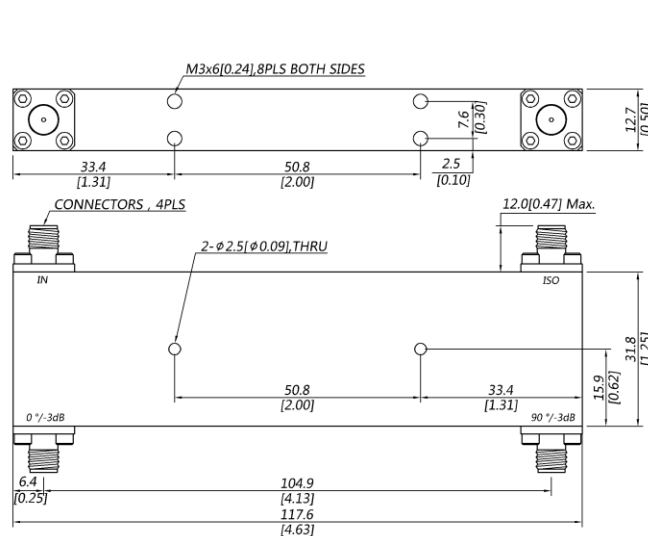
### Specifications

All specifications are subject to change without notice at any time

Frequency Range	GHz	1-8	8-18
Nom. Phase	Deg. (Typ.)	90	90
Ports VSWR	:1 (Max.)	1.4	1.4
Insertion Loss <sup>1</sup>	dB(Max.)	1.4	2
Amp. Unbalance	dB(Max.)	±0.8	±0.8
Phase Unbalance	Deg. (Max.)	±8	±8
Isolation	dB(Min.)	18	17
Power <sup>2</sup>	W(Max.)	CW: 30; Peak: 3000	
Weight	g(Max.)	150	Dimension <sup>3</sup> mm (LxWxH) 31.8x117.6x12.7
Interface	Stainless steel connector; Input: SMA [F], Output: SMA [F]		
Finishing	Nickel plating		
Temperature	Operating: -55~+85°C; Storage: -55~+100°C		
Environmental	Per MIL-STD-202F, Method 107D, 204D, 213B (optional, contact supplier for detail info.)		
Eng. Customized	N/A		

- Note:
- Above Theoretical Loss 3dB
  - VSWR ≤ 1.2 required for CW
  - Unless otherwise specified, Decimal tolerance: x.±1; .x±0.5; .xx±0.1

### Outline Drawing



# 4-Port 90° Hybrid Coupler

## Model QN010180 Rev.B

1-18GHz 4-Port 3dB 90° Hybrid, Coaxial connector

### Typical Graph

Typical test temperature @25°C

