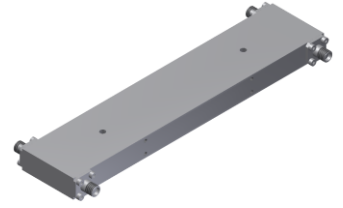


4-Port 90° Hybrid Coupler

Model QN006180 Rev.A

0.6-18GHz 4-Port 3dB 90° Hybrid, Coaxial connector



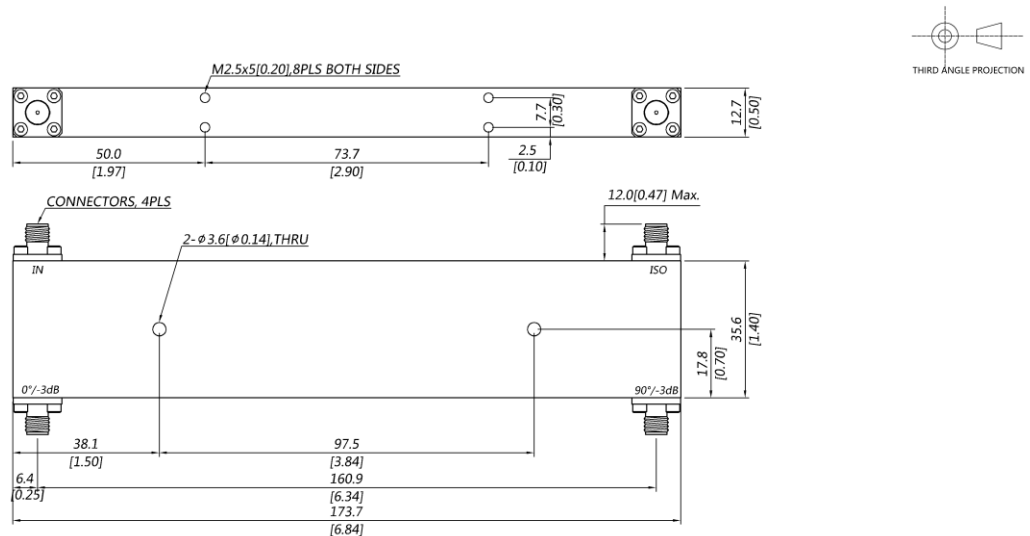
Specifications

All specifications are subject to change without notice at any time

| | | | |
|-----------------------------|---|--------------------|---|
| Frequency Range | GHz | 0.6-8 | 8-18 |
| Nom. Phase | Deg. (Typ.) | 90 | 90 |
| Ports VSWR | :1 (Max.) | 1.3 | 1.4 |
| Insertion Loss ¹ | dB(Max.) | 1.9 | 3 |
| Amp. Unbalance | dB(Max.) | ±1 | ±1 |
| Phase Unbalance | Deg. (Max.) | ±8 | ±8 |
| Isolation | dB(Min.) | 18 | 16 |
| Power ² | W(Max.) | CW: 30; Peak: 3000 | |
| Weight | g(Max.) | 230 | Dimension ³ mm (LxWxH) 35.6x173.7x12.7 |
| Interface | Stainless steel connector; Input: SMA [F], Output: SMA [F] | | |
| Finishing | Alloy iridite | | |
| Temperature | Operating: -55~+85°C; Storage: -55~+100°C | | |
| Environmental | Per MIL-STD-202F, Method 107D, 204D, 213B (optional, contact supplier for detail info.) | | |
| Eng. Customized | N/A | | |

- Note:
- Above Theoretical Loss 3dB
 - VSWR ≤ 1.2 required for CW
 - Unless otherwise specified, Decimal tolerance: x.±1; .x±0.5; .xx±0.1

Outline Drawing



4-Port 90° Hybrid Coupler

Model QN006180 Rev.A

0.6-18GHz 4-Port 3dB 90° Hybrid, Coaxial connector

Typical Graph

Typical test temperature @25°C

