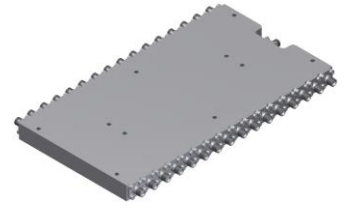


Power Divider/Combiner

Model P32N180400 Rev.A

18-40GHz 32-Way Power Divider/Combiner, Coaxial connector



Specifications

All specifications are subject to change without notice at any time

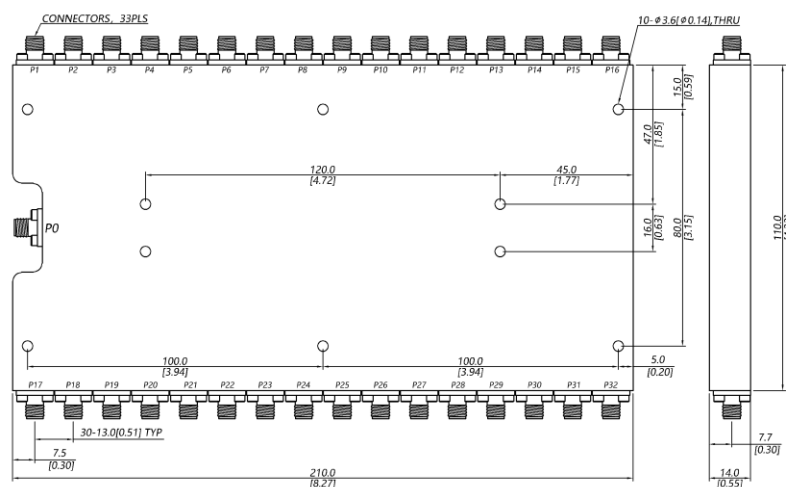
| | | | |
|-----------------------------|---|-------------------------------|--|
| Frequency Range | GHz | 18-26.5 | 26.5-40 |
| Sum VSWR | :1 (Max.) | 1.8 | 1.8 |
| Distri. VSWR | :1 (Max.) | 1.7 | 1.8 |
| Insertion Loss ¹ | dB(Max.) | 4.5 | 6 |
| Amp. Unbalance | dB(Max.) | ±0.7 | ±0.9 |
| Phase Unbalance | Deg. (Max.) | ±10 | ±12 |
| Isolation | dB(Min.) | 16 | 16 |
| Power ² | W(Max.) | CW: FOR 20, REV 2; Peak: 3000 | |
| Weight | g(Max.) | 1000 | Dimension ³ mm (LxWxH) 110x210x14.0 |
| Interface | Stainless steel connector; Sum: 2.92mm [F], Distri.: 2.92mm [F] | | |
| Finishing | Alloy iridite | | |
| Temperature | Operating: -55~+85°C; Storage: -55~+100°C | | |
| Environmental | Per MIL-STD-202F, Method 107D, 204D, 213B (optional, contact supplier for detail info.) | | |
| Eng. Customized | N/A | | |

Note: 1. Above Theoretical Loss 15dB

2. VSWR ≤1.2 required for forward CW; Amp. & phase unbalance required for reversed input signals

3. Unless otherwise specified, Decimal tolerance: x.±1; .x±0.5; .xx±0.1

Outline Drawing



Power Divider/Combiner

Model P32N180400 Rev.A

18-40GHz 32-Way Power Divider/Combiner, Coaxial connector

Typical Graph

Typical test temperature @25°C

