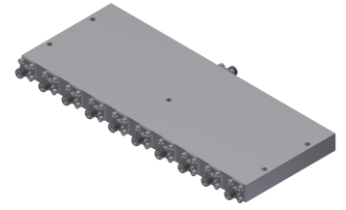


Power Divider/Combiner

Model P10N240440 Rev.A

24-44GHz 10-Way Power Divider/Combiner, Coaxial connector



Specifications

All specifications are subject to change without notice at any time

Frequency Range	GHz	24-44	
Sum VSWR	:1 (Max.)	1.8	
Distri. VSWR	:1 (Max.)	1.8	
Insertion Loss ¹	dB(Max.)	5.4	
Amp. Unbalance	dB(Max.)	±1.2	
Phase Unbalance	Deg. (Max.)	±14	
Isolation	dB(Min.)	16	
Power ²	W(Max.)	CW: FOR 20, REV 1; Peak: 1000	
Weight	g(Max.)	560	Dimension ³ mm (LxWxH) 77.0x193x12.7
Interface	Stainless steel connector; Sum: 2.4mm [F], Distri.: 2.4mm [F]		
Finishing	Alloy iridite		
Temperature	Operating: -55~+85°C; Storage: -55~+100°C		
Environmental	Per MIL-STD-202F, Method 107D, 204D, 213B (optional, contact supplier for detail info.)		
Eng. Customized	N/A		

Note: 1. Above Theoretical Loss 10dB

2. VSWR ≤ 1.2 required for forward CW; Amp. & phase unbalance required for reversed input signals

3. Unless otherwise specified, Decimal tolerance: x.±1; .x±0.5; .xx±0.1

Outline Drawing

