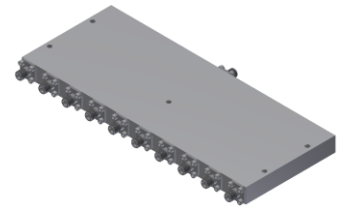


Power Divider/Combiner

Model P10N180400 Rev.A

18-40GHz 10-Way Power Divider/Combiner, Coaxial connector



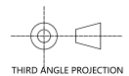
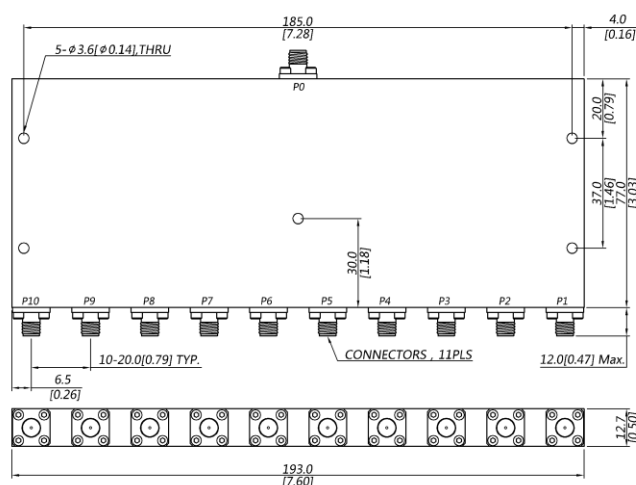
Specifications

All specifications are subject to change without notice at any time

| | | | |
|-----------------------------|---|-------------------------------|---|
| Frequency Range | GHz | 18-26.5 | 26.5-40 |
| Sum VSWR | :1 (Max.) | 1.7 | 1.8 |
| Distri. VSWR | :1 (Max.) | 1.7 | 1.8 |
| Insertion Loss ¹ | dB(Max.) | 3.6 | 4.9 |
| Amp. Unbalance | dB(Max.) | ±1 | ±1.2 |
| Phase Unbalance | Deg. (Max.) | ±11 | ±14 |
| Isolation | dB(Min.) | 16 | 18 |
| Power ² | W(Max.) | CW: FOR 20, REV 2; Peak: 3000 | |
| Weight | g(Max.) | 560 | Dimension ³ mm (LxWxH) 77.0x193x12.7 |
| Interface | Stainless steel connector; Sum: 2.92mm [F], Distri.: 2.92mm [F] | | |
| Finishing | Alloy iridite | | |
| Temperature | Operating: -55~+85°C; Storage: -55~+100°C | | |
| Environmental | Per MIL-STD-202F, Method 107D, 204D, 213B (optional, contact supplier for detail info.) | | |
| Eng. Customized | N/A | | |

- Note:
- Above Theoretical Loss 10dB
 - VSWR ≤ 1.2 required for forward CW; Amp. & phase unbalance required for reversed input signals
 - Unless otherwise specified, Decimal tolerance: x.±1; .x±0.5; .xx±0.1

Outline Drawing



Power Divider/Combiner

Model P10N180400 Rev.A

18-40GHz 10-Way Power Divider/Combiner, Coaxial connector

Typical Graph

Typical test temperature @25°C

