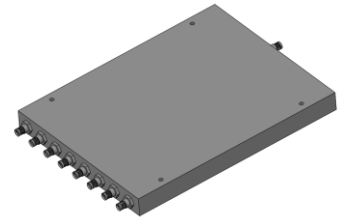


# Power Divider

## Model P08T00500600 Rev.B

0.5-6GHz 8-Way Power Divider, Coaxial connector



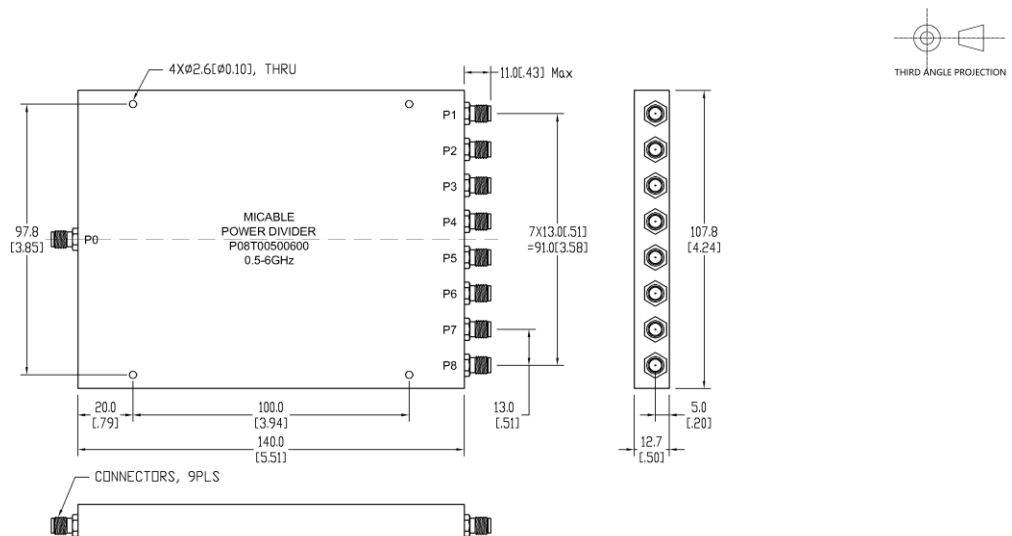
### Specifications

All specifications are subject to change without notice at any time

Frequency Range	GHz	0.5-6	
Sum VSWR	:1 (Max.)	1.45	
Distri. VSWR	:1 (Max.)	1.35	
Insertion Loss <sup>1</sup>	dB(Max.)	1.8	
Amp. Unbalance	dB(Max.)	±0.3	
Phase Unbalance	Deg. (Max.)	±5	
Isolation	dB(Min.)	16	
Power <sup>2</sup>	W(Max.)	CW: FOR 30, REV 1; Peak: 500	
Weight	g(Max.)	350	Dimension <sup>3</sup> mm (LxWxH) 140.0x107.8x12.7
Interface	Sum: SMA [F], Distri.: SMA [F]; Stainless steel connector, Per IEC 61169		
Finishing	Sand blast		
Temperature	Operating: -40~+70°C; Storage: -55~+85°C		
Environmental	N/A		
Eng. Customized	N/A		

- Note:
1. Above Theoretical Loss 9dB
  2. VSWR ≤ 1.2 required for CW
  3. Unless otherwise specified, Decimal tolerance: x.±1; .x±0.5; .xx±0.1

### Outline Drawing



# Power Divider

## Model P08T00500600 Rev.B

0.5-6GHz 8-Way Power Divider, Coaxial connector

### Typical Graph

Typical test environment: 25°C and 60%RH

