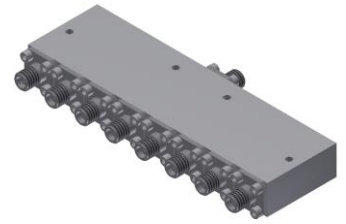


Power Divider/Combiner

Model P08N265670 Rev.A

26.5-67GHz 8-Way Power Divider/Combiner, Coaxial connector



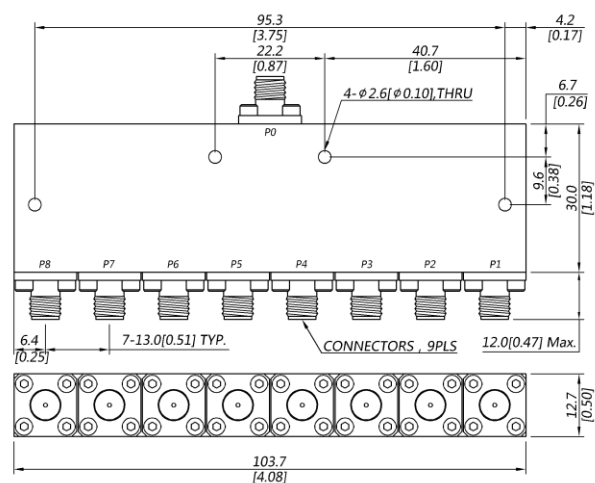
Specifications

All specifications are subject to change without notice at any time

Frequency Range	GHz	26.5-40	40-50	50-67
Sum VSWR	:1 (Max.)	1.8	1.8	1.9
Distri. VSWR	:1 (Max.)	1.7	1.8	1.9
Insertion Loss ¹	dB(Max.)	3.2	3.8	4.9
Amp. Unbalance	dB(Max.)	±0.6	±0.7	±0.9
Phase Unbalance	Deg. (Max.)	±8	±10	±12
Isolation	dB(Min.)	16	16	16
Power ²	W(Max.)	CW: FOR 12, REV 1; Peak: 1000		
Weight	g(Max.)	150	Dimension ³ mm (LxWxH)	30.0x103.7x12.7
Interface	Stainless steel connector; Sum: 1.85mm [F], Distri.: 1.85mm [F]			
Finishing	Alloy iridite			
Temperature	Operating: -55~+85°C; Storage: -55~+100°C			
Environmental	Per MIL-STD-202F, Method 107D, 204D, 213B (optional, contact supplier for detail info.)			
Eng. Customized	N/A			

- Note:
- Above Theoretical Loss 9dB
 - VSWR ≤ 1.2 required for forward CW; Amp. & phase unbalance required for reversed input signals
 - Unless otherwise specified, Decimal tolerance: x.±1; .x±0.5; .xx±0.1

Outline Drawing



Power Divider/Combiner

Model P08N265670 Rev.A

26.5-67GHz 8-Way Power Divider/Combiner, Coaxial connector

Typical Graph

Typical test temperature @25°C

