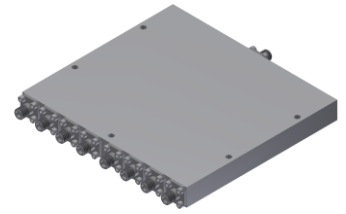


Power Divider/Combiner

Model P08N010400 Rev.B

1-40GHz 8-Way Power Divider/Combiner, Coaxial connector



Specifications

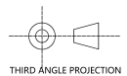
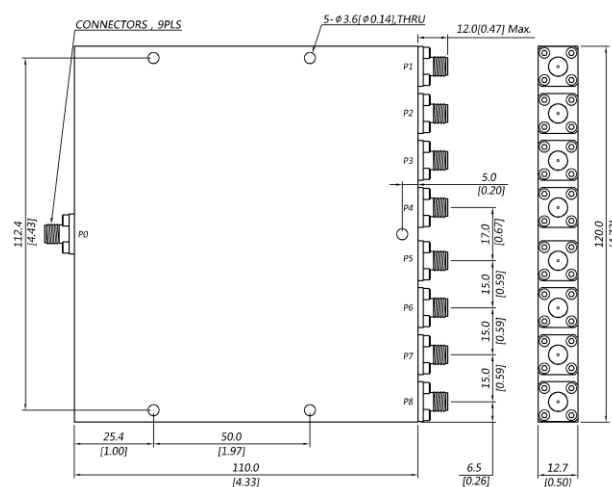
All specifications are subject to change without notice at any time

Frequency Range	GHz	1-8	8-18	18-26.5	26.5-40
Sum VSWR	:1 (Max.)	1.6	1.6	1.7	1.7
Distri. VSWR	:1 (Max.)	1.6	1.6	1.7	1.7
Insertion Loss ¹	dB(Max.)	2.6	4.3	5.5	7.3
Amp. Unbalance	dB(Max.)	±0.4	±0.5	±0.6	±0.8
Phase Unbalance	Deg. (Max.)	±5	±7	±9	±11
Isolation	dB(Min.)	15	18	18	18
Power ²	W(Max.)	CW: FOR 20, REV 2; Peak: 3000			
Weight	g(Max.)	490	Dimension ³ mm (LxWxH)	110x120x12.7	
Interface	Stainless steel connector; Sum: 2.92mm [F], Distri.: 2.92mm [F]				
Finishing	Alloy iridite				
Temperature	Operating: -55~+85°C; Storage: -55~+100°C				
Environmental	Per MIL-STD-202F, Method 107D, 204D, 213B (optional, contact supplier for detail info.)				
Eng. Customized	N/A				

Note:

1. Above Theoretical Loss 9dB
2. VSWR ≤ 1.2 required for forward CW; Amp. & phase unbalance required for reversed input signals
3. Unless otherwise specified, Decimal tolerance: x.±1; .x±0.5; .xx±0.1

Outline Drawing



Power Divider/Combiner

Model P08N010400 Rev.B

1-40GHz 8-Way Power Divider/Combiner, Coaxial connector

Typical Graph

Typical test temperature @25°C

