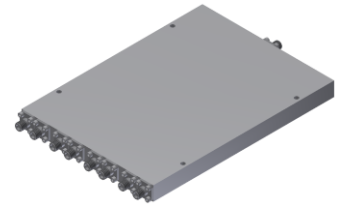


# Power Divider/Combiner

## Model P08N005400 Rev.B

0.5-40GHz 8-Way Power Divider/Combiner, Coaxial connector



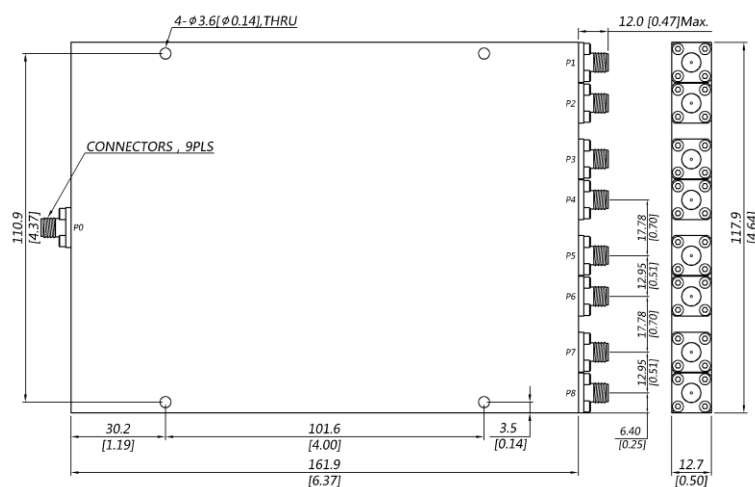
### Specifications

All specifications are subject to change without notice at any time

Frequency Range	GHz	0.5-8	8-18	18-26.5	26.5-40
Sum VSWR	:1 (Max.)	1.7	1.6	1.7	1.8
Distri. VSWR	:1 (Max.)	1.7	1.5	1.6	1.8
Insertion Loss <sup>1</sup>	dB(Max.)	3.6	6.2	8.2	11
Amp. Unbalance	dB(Max.)	±0.3	±0.4	±0.5	±0.6
Phase Unbalance	Deg. (Max.)	±3	±4	±6	±8
Isolation	dB(Min.)	15	18	18	18
Power <sup>2</sup>	W(Max.)	CW: FOR 20, REV 2; Peak: 3000			
Weight	g(Max.)	730	Dimension <sup>3</sup> mm (LxWxH)		161.9x117.9x12.7
Interface	Stainless steel connector; Sum: 2.92mm [F], Distri.: 2.92mm [F]				
Finishing	Alloy iridite				
Temperature	Operating: -55~+85°C; Storage: -55~+100°C				
Environmental	Per MIL-STD-202F, Method 107D, 204D, 213B (optional, contact supplier for detail info.)				
Eng. Customized	N/A				

- Note:
- Above Theoretical Loss 9dB
  - VSWR ≤ 1.2 required for forward CW; Amp. & phase unbalance required for reversed input signals
  - Unless otherwise specified, Decimal tolerance: x.±1; .x±0.5; .xx±0.1

### Outline Drawing



# Power Divider/Combiner

## Model P08N005400 Rev.B

0.5-40GHz 8-Way Power Divider/Combiner, Coaxial connector

### Typical Graph

Typical test temperature @25°C

