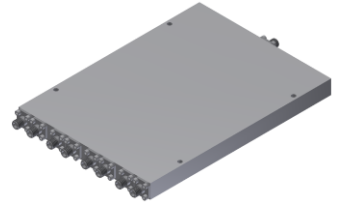


# Power Divider/Combiner

## Model P08N005265 Rev.D

0.5-26.5GHz 8-Way Power Divider/Combiner, Coaxial connector



### Specifications

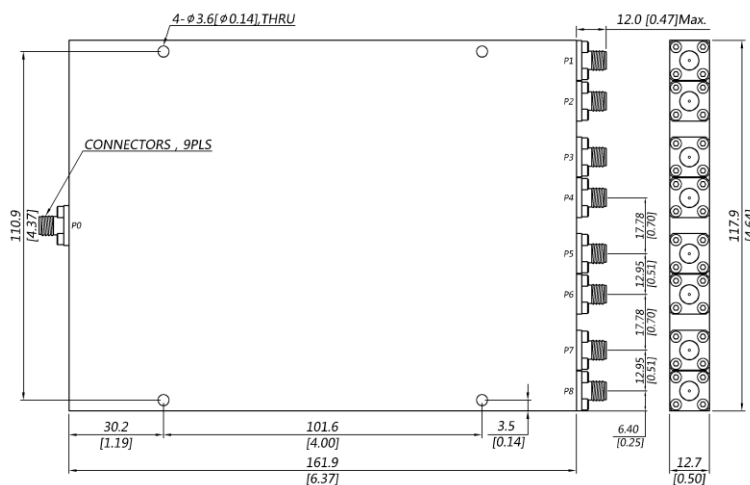
All specifications are subject to change without notice at any time

Frequency Range	GHz	0.5-8	8-18	18-26.5
Sum VSWR	:1 (Max.)	1.6	1.6	1.6
Distri. VSWR	:1 (Max.)	1.5	1.5	1.6
Insertion Loss <sup>1</sup>	dB(Max.)	3.6	6	8
Amp. Unbalance	dB(Max.)	±0.4	±0.4	±0.5
Phase Unbalance	Deg. (Max.)	±5	±6	±7
Isolation	dB(Min.)	15	18	18
Power <sup>2</sup>	W(Max.)	CW: FOR 30, REV 2; Peak: 3000		
Weight	g(Max.)	730	Dimension <sup>3</sup> mm (LxWxH)	161.9x117.9x12.7
Interface	Stainless steel connector; Sum: SMA [F], Distri.: SMA [F]			
Finishing	Alloy iridite			
Temperature	Operating: -55~+85°C; Storage: -55~+100°C			
Environmental	Per MIL-STD-202F, Method 107D, 204D, 213B (optional, contact supplier for detail info.)			
Eng. Customized	N/A			

Note:

- Above Theoretical Loss 9dB
- VSWR ≤ 1.2 required for forward CW; Amp. & phase unbalance required for reversed input signals
- Unless otherwise specified, Decimal tolerance: x.±1; .x±0.5; .xx±0.1

### Outline Drawing



# Power Divider/Combiner

## Model P08N005265 Rev.D

0.5-26.5GHz 8-Way Power Divider/Combiner, Coaxial connector

### Typical Graph

Typical test temperature @25°C

