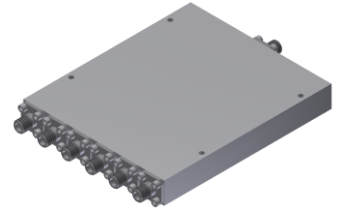


# Power Divider/Combiner

## Model P06N020400 Rev.A

2-40GHz 6-Way Power Divider/Combiner, Coaxial connector



### Specifications

All specifications are subject to change without notice at any time

Frequency Range	GHz	2-8	8-18	18-40
Sum VSWR	:1 (Max.)	1.6	1.6	1.7
Distri. VSWR	:1 (Max.)	1.6	1.6	1.7
Insertion Loss	<sup>1</sup> dB(Max.)	3.4	4.2	5.5
Amp. Unbalance	dB(Max.)	±0.7	±0.8	±0.9
Phase Unbalance	Deg. (Max.)	±8	±10	±12
Isolation	dB(Min.)	16	18	18
Power	<sup>2</sup> W(Max.)	CW: FOR 20, REV 2; Peak: 3000		
Weight	g(Max.)	305	Dimension <sup>3</sup> mm (LxWxH)	98.0x82.5x12.7
Interface	Stainless steel connector; Sum: 2.92mm [F], Distri.: 2.92mm [F]			
Finishing	Alloy iridite			
Temperature	Operating: -55~+85°C; Storage: -55~+100°C			
Environmental	Per MIL-STD-202F, Method 107D, 204D, 213B (optional, contact supplier for detail info.)			
Eng. Customized	N/A			

Note:

- Above Theoretical Loss 7.8dB
- VSWR ≤ 1.2 required for forward CW; Amp. & phase unbalance required for reversed input signals
- Unless otherwise specified, Decimal tolerance: x±1; .x±0.5; .xx±0.1

### Outline Drawing

