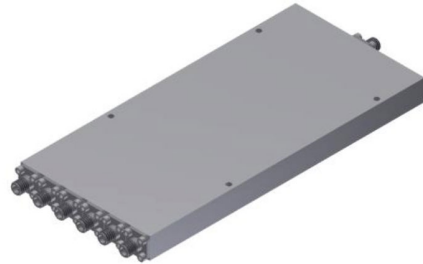


Frequency Range	GHz	0.8-18
Sum P[0] VSWR	:1 (Max.)	1.6
Output P[N] VSWR	:1 (Max.)	1.6
Insertion Loss*	dB(Max.)	3.4
Amplitude Balance	dB(Max.)	±0.6
Phase Balance	Deg. (Max.)	±8
Isolation	dB(Min.)	16
CW Power	W(Typ.)	20



P[0] Connector Type	SMA [F]
P[N] Connector Type	SMA [F]
Weight g(Max.)	470
Dimension mm(Max.)	165.1x78x12.7
Peak Power KW(Max.)	3

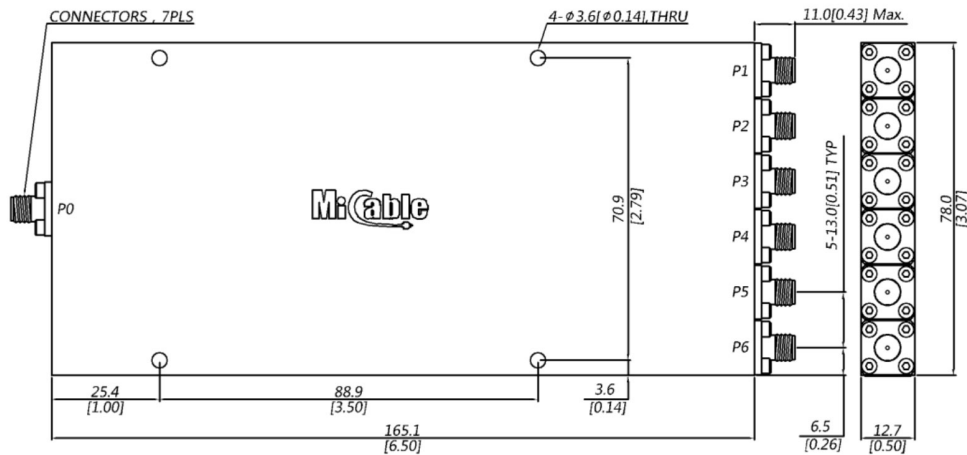
*** Above Theoretical 7.8dB**

Features

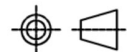
-Stainless steel precision coaxial connector, I.A.W. MIL-PRF-39012 and MIL-STD-348.
Nickel plating, I.A.W SAE-AMS-QQ-N-290.

Environmental Performance

-Operating Temp.: -55--+85°C; Storage Temp.: -55--+100°C;
- Thermal Shock, Vibration, Shock Per MIL-STD-202F, Method 107D, 204D and 213B ;



Unit: mm , Unless otherwise specified, .x ±1.0 .xx ±0.50



ALL SPECIFICATIONS ARE SUBJECT TO CHANGE WITHOUT NOTICE AT ANY TIME