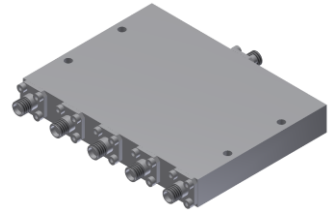


# Power Divider/Combiner

## Model P05N240440 Rev.A

24-44GHz 5-Way Power Divider/Combiner, Coaxial connector



### Specifications

All specifications are subject to change without notice at any time

Frequency Range	GHz	24-44	
Sum VSWR	:1 (Max.)	1.8	
Distri. VSWR	:1 (Max.)	1.8	
Insertion Loss <sup>1</sup>	dB(Max.)	2.8	
Amp. Unbalance	dB(Max.)	±1	
Phase Unbalance	Deg. (Max.)	±10	
Isolation	dB(Min.)	16	
Power <sup>2</sup>	W(Max.)	CW: FOR 20, REV 1; Peak: 1000	
Weight	g(Max.)	255	Dimension <sup>3</sup> mm (LxWxH) 68.6x93.0x12.7
Interface	Stainless steel connector; Sum: 2.4mm [F], Distri.: 2.4mm [F]		
Finishing	Alloy iridite		
Temperature	Operating: -55~+85°C; Storage: -55~+100°C		
Environmental	Per MIL-STD-202F, Method 107D, 204D, 213B (optional, contact supplier for detail info.)		
Eng. Customized	N/A		

- Note:
1. Above Theoretical Loss 7dB
  2. VSWR ≤ 1.2 required for forward CW; Amp. & phase unbalance required for reversed input signals
  3. Unless otherwise specified, Decimal tolerance: x.±1; .x±0.5; .xx±0.1

### Outline Drawing

