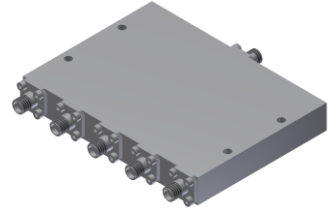


Power Divider/Combiner

Model P05N060265 Rev.A

6-26.5GHz 5-Way Power Divider/Combiner, Coaxial connector



Specifications

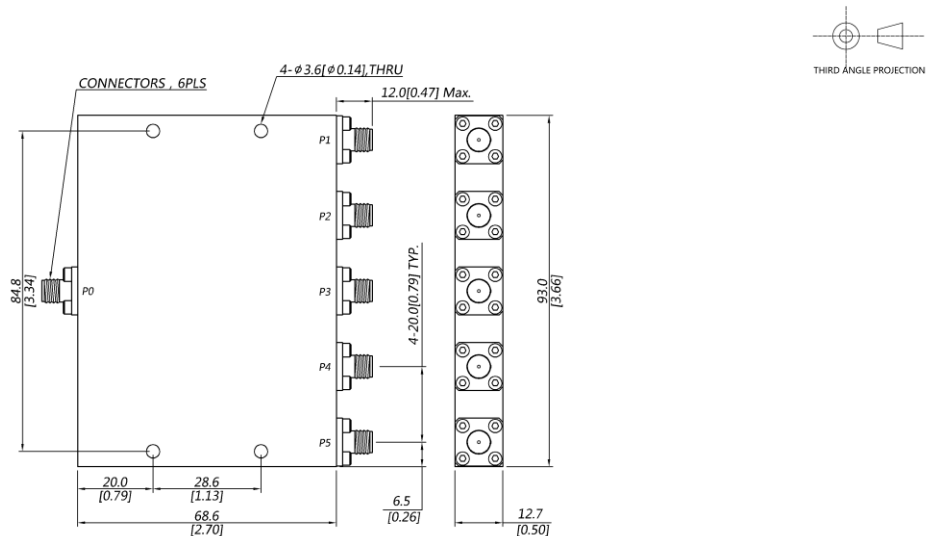
All specifications are subject to change without notice at any time

Frequency Range	GHz	6-18	18-26.5
Sum VSWR	:1 (Max.)	1.5	1.6
Distri. VSWR	:1 (Max.)	1.6	1.6
Insertion Loss ¹	dB(Max.)	1.4	1.8
Amp. Unbalance	dB(Max.)	±0.6	±0.8
Phase Unbalance	Deg. (Max.)	±7	±8
Isolation	dB(Min.)	16	18
Power ²	W(Max.)	CW: FOR 30, REV 2; Peak: 3000	
Weight	g(Max.)	255	Dimension ³ mm (LxWxH) 68.6x93.0x12.7
Interface	Stainless steel connector; Sum: SMA [F], Distri.: SMA [F]		
Finishing	Alloy iridite		
Temperature	Operating: -55~+85°C; Storage: -55~+100°C		
Environmental	Per MIL-STD-202F, Method 107D, 204D, 213B (optional, contact supplier for detail info.)		
Eng. Customized	N/A		

Note:

1. Above Theoretical Loss 7dB
2. VSWR ≤ 1.2 required for forward CW; Amp. & phase unbalance required for reversed input signals
3. Unless otherwise specified, Decimal tolerance: x.±1; .x±0.5; .xx±0.1

Outline Drawing



Power Divider/Combiner

Model P05N060265 Rev.A

6-26.5GHz 5-Way Power Divider/Combiner, Coaxial connector

Typical Graph

Typical test temperature @25°C

