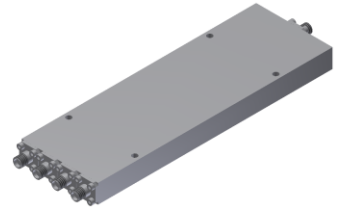


# Power Divider/Combiner

## Model P04N005180 Rev.E

0.5-18GHz 4-Way Power Divider/Combiner, Coaxial connector



### Specifications

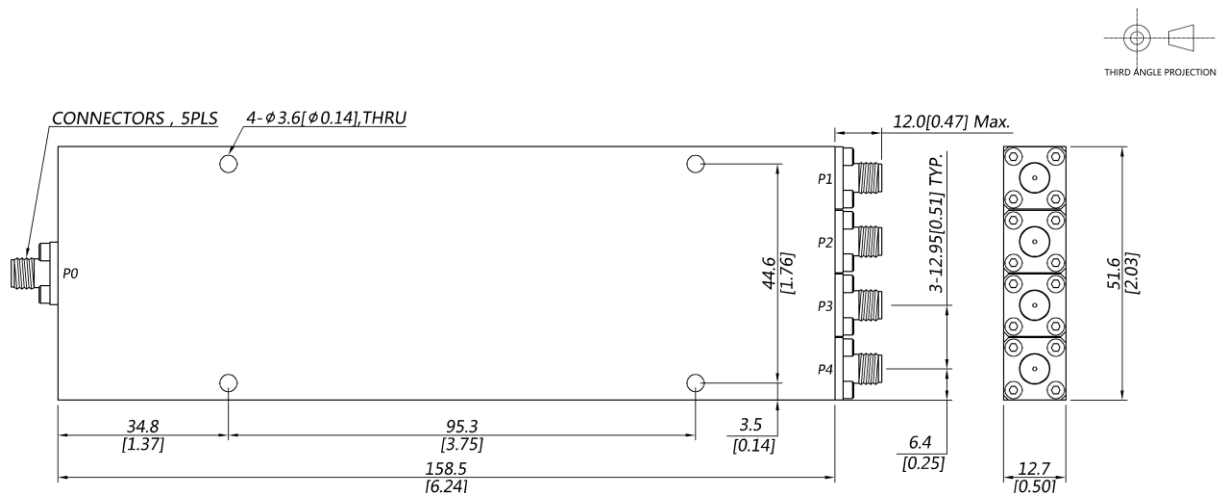
All specifications are subject to change without notice at any time

Frequency Range	GHz	0.5-8	8-18
Sum VSWR	:1 (Max.)	1.5	1.5
Distri. VSWR	:1 (Max.)	1.4	1.5
Insertion Loss <sup>1</sup>	dB(Max.)	2.4	4
Amp. Unbalance	dB(Max.)	±0.3	±0.4
Phase Unbalance	Deg. (Max.)	±4	±5
Isolation	dB(Min.)	18	18
Power <sup>2</sup>	W(Max.)	CW: FOR 30, REV 5; Peak: 3000	
Weight	g(Max.)	310	Dimension <sup>3</sup> mm (LxWxH) 158.5x51.6x12.7
Interface	Stainless steel connector; Sum: SMA [F], Distri.: SMA [F]		
Finishing	Alloy iridite		
Temperature	Operating: -55~+85°C; Storage: -55~+100°C		
Environmental	Per MIL-STD-202F, Method 107D, 204D, 213B (optional, contact supplier for detail info.)		
Eng. Customized	N/A		

Note:

1. Above Theoretical Loss 6dB
2. VSWR ≤ 1.2 required for forward CW; Amp. & phase unbalance required for reversed input signals
3. Unless otherwise specified, Decimal tolerance: x.±1; .x±0.5; .xx±0.1

### Outline Drawing



# Power Divider/Combiner

## Model P04N005180 Rev.E

0.5-18GHz 4-Way Power Divider/Combiner,Coaxial connector

### Typical Graph

Typical test temperature @25°C

