

# Power Divider/Combiner

## Model P02N400670 Rev.A

40-67GHz 2-Way Power Divider/Combiner, Coaxial connector



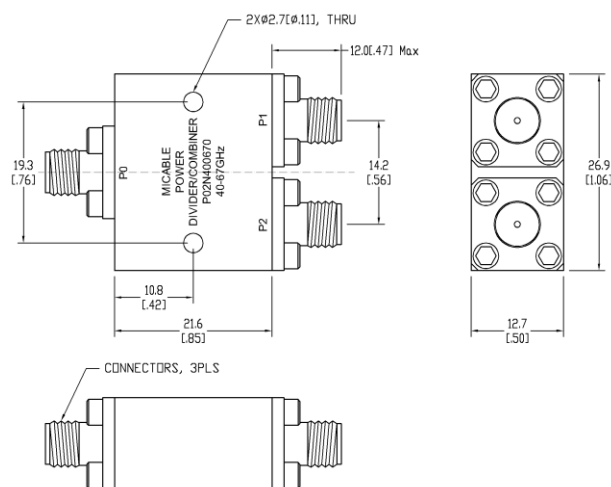
### Specifications

All specifications are subject to change without notice at any time

Frequency Range	GHz	40-50	50-67
Sum VSWR	:1 (Max.)	1.7	1.8
Distri. VSWR	:1 (Max.)	1.7	1.8
Insertion Loss <sup>1</sup>	dB(Max.)	1.7	2.1
Amp. Unbalance	dB(Max.)	±0.4	±0.6
Phase Unbalance	Deg. (Max.)	±5	±7
Isolation	dB(Min.)	18	18
Power <sup>2</sup>	W(Max.)	CW: FOR 12, REV 1; Peak: 1000	
Weight	g(Max.)	35	Dimension <sup>3</sup> mm (LxWxH) 21.6x26.9x12.7
Interface	Sum: 1.85mm [F], Distri.: 1.85mm [F]; Stainless steel connector, Per IEC 61169		
Finishing	Nickel plating, Per QQ-N-290		
Temperature	Operating: -55~+85°C; Storage: -55~+100°C		
Environmental	Optional: Per MIL-STD-202F (contact supplier for detail info.)		
Eng. Customized	N/A		

- Note:
- Above Theoretical Loss 3dB
  - VSWR ≤ 1.2 required for forward CW; Amp. & phase unbalance required for reversed input signals
  - Unless otherwise specified, Decimal tolerance: x.±1; .x±0.5; .xx±0.1

### Outline Drawing



# Power Divider/Combiner

## Model P02N400670 Rev.A

40-67GHz 2-Way Power Divider/Combiner, Coaxial connector

### Typical Graph

Typical test environment: 25°C and 60%RH

