

Power Divider/Combiner

Model P02N265670 Rev.A

26.5-67GHz 2-Way Power Divider/Combiner, Coaxial connector



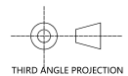
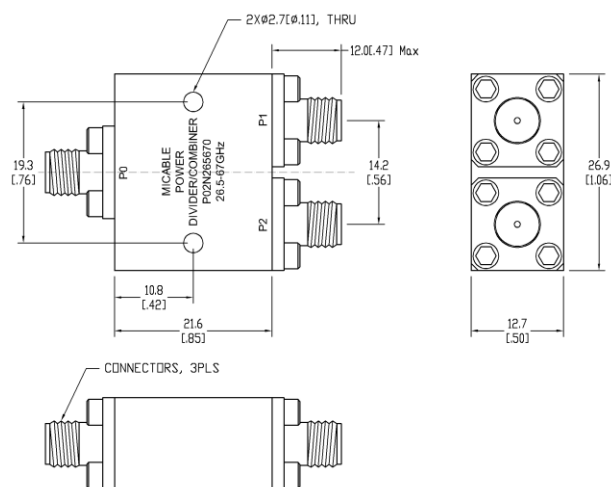
Specifications

All specifications are subject to change without notice at any time

Frequency Range	GHz	26.5-40	40-50	50-67
Sum VSWR	:1 (Max.)	1.7	1.8	1.8
Distri. VSWR	:1 (Max.)	1.7	1.8	1.8
Insertion Loss ¹	dB(Max.)	1.4	1.7	2.1
Amp. Unbalance	dB(Max.)	±0.3	±0.4	±0.6
Phase Unbalance	Deg. (Max.)	±4	±5	±7
Isolation	dB(Min.)	18	18	18
Power ²	W(Max.)	CW: FOR 12, REV 1; Peak: 1000		
Weight	g(Max.)	35	Dimension ³ mm (LxWxH)	21.6x26.9x12.7
Interface	Sum: 1.85mm [F], Distri.: 1.85mm [F]; Stainless steel connector, Per IEC 61169			
Finishing	Nickel plating, Per QQ-N-290			
Temperature	Operating: -55~+85°C; Storage: -55~+100°C			
Environmental	Optional: Per MIL-STD-202F (contact supplier for detail info.)			
Eng. Customized	N/A			

- Note:
- Above Theoretical Loss 3dB
 - VSWR ≤ 1.2 required for forward CW; Amp. & phase unbalance required for reversed input signals
 - Unless otherwise specified, Decimal tolerance: x.±1; .x±0.5; .xx±0.1

Outline Drawing



Power Divider/Combiner

Model P02N265670 Rev.A

26.5-67GHz 2-Way Power Divider/Combiner, Coaxial connector

Typical Graph

Typical test environment: 25°C and 60%RH

