

Power Divider/Combiner

Model P02N180500 Rev.C

18-50GHz 2-Way Power Divider/Combiner, Coaxial connector



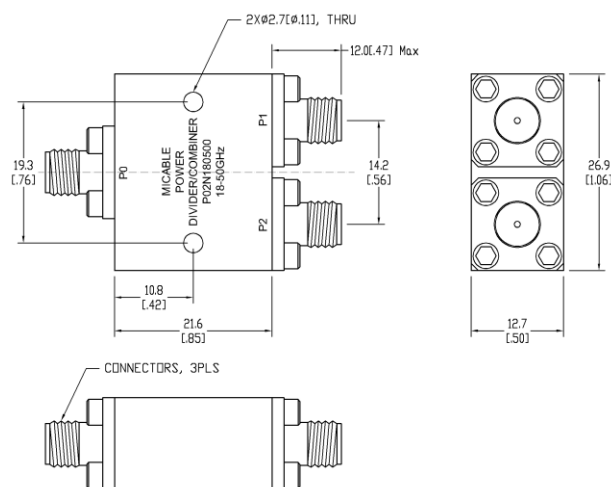
Specifications

All specifications are subject to change without notice at any time

| | | | |
|-----------------------------|--|-------------------------------|--|
| Frequency Range | GHz | 18-40 | 40-50 |
| Sum VSWR | :1 (Max.) | 1.6 | 1.7 |
| Distri. VSWR | :1 (Max.) | 1.6 | 1.6 |
| Insertion Loss ¹ | dB(Max.) | 1.3 | 1.5 |
| Amp. Unbalance | dB(Max.) | ±0.3 | ±0.4 |
| Phase Unbalance | Deg. (Max.) | ±4 | ±5 |
| Isolation | dB(Min.) | 18 | 18 |
| Power ² | W(Max.) | CW: FOR 20, REV 1; Peak: 1000 | |
| Weight | g(Max.) | 35 | Dimension ³ mm (LxWxH) 21.6x26.9x12.7 |
| Interface | Sum: 2.4mm [F], Distri.: 2.4mm [F]; Stainless steel connector, Per IEC 61169 | | |
| Finishing | Nickel plating, Per QQ-N-290 | | |
| Temperature | Operating: -55~+85°C; Storage: -55~+100°C | | |
| Environmental | Optional: Per MIL-STD-202F (contact supplier for detail info.) | | |
| Eng. Customized | N/A | | |

- Note:
- Above Theoretical Loss 3dB
 - VSWR ≤ 1.2 required for forward CW; Amp. & phase unbalance required for reversed input signals
 - Unless otherwise specified, Decimal tolerance: x.±1; .x±0.5; .xx±0.1

Outline Drawing



Power Divider/Combiner

Model P02N180500 Rev.C

18-50GHz 2-Way Power Divider/Combiner, Coaxial connector

Typical Graph

Typical test environment: 25°C and 60%RH

