

Power Divider/Combiner

Model P02N180400 Rev.C

18-40GHz 2-Way Power Divider/Combiner, Coaxial connector



Specifications

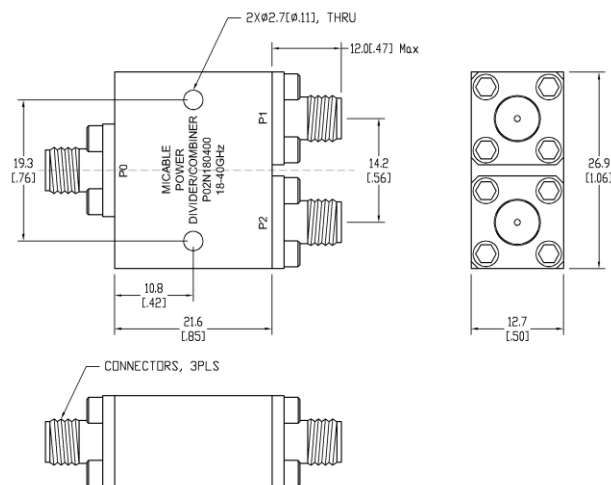
All specifications are subject to change without notice at any time

Frequency Range	GHz	18-26.5	26.5-40
Sum VSWR	:1 (Max.)	1.5	1.6
Distri. VSWR	:1 (Max.)	1.5	1.6
Insertion Loss ¹	dB(Max.)	1	1.2
Amp. Unbalance	dB(Max.)	±0.2	±0.3
Phase Unbalance	Deg. (Max.)	±3	±4
Isolation	dB(Min.)	18	18
Power ²	W(Max.)	CW: FOR 20, REV 2; Peak: 3000	
Weight	g(Max.)	35	Dimension ³ mm (LxWxH) 21.6x26.9x12.7
Interface	Sum: 2.92mm [F], Distri.: 2.92mm [F]; Stainless steel connector, Per IEC 61169		
Finishing	Nickel plating, Per QQ-N-290		
Temperature	Operating: -55~+85°C; Storage: -55~+100°C		
Environmental	Optional: Per MIL-STD-202F (contact supplier for detail info.)		
Eng. Customized	N/A		

Note:

- Above Theoretical Loss 3dB
- VSWR ≤ 1.2 required for forward CW; Amp. & phase unbalance required for reversed input signals
- Unless otherwise specified, Decimal tolerance: x.±1; .x±0.5; .xx±0.1

Outline Drawing



Power Divider/Combiner

Model P02N180400 Rev.C

18-40GHz 2-Way Power Divider/Combiner, Coaxial connector

Typical Graph

Typical test environment: 25°C and 60%RH

