

# Power Divider/Combiner

## Model P02N180265 Rev.D

18-26.5GHz 2-Way Power Divider/Combiner, Coaxial connector



### Specifications

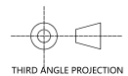
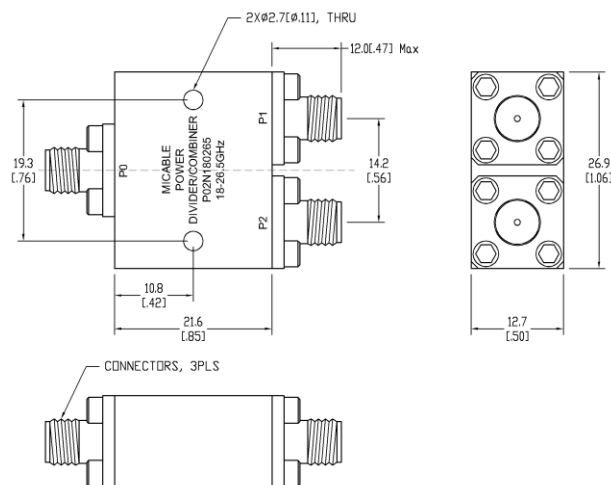
All specifications are subject to change without notice at any time

Frequency Range	GHz	18-26.5
Sum VSWR	:1 (Max.)	1.5
Distri. VSWR	:1 (Max.)	1.5
Insertion Loss <sup>1</sup>	dB(Max.)	1
Amp. Unbalance	dB(Max.)	±0.2
Phase Unbalance	Deg. (Max.)	±3
Isolation	dB(Min.)	18
Power <sup>2</sup>	W(Max.)	CW: FOR 30, REV 2; Peak: 3000
Weight	g(Max.)	35
	Dimension <sup>3</sup>	mm (LxWxH)
		21.6x26.9x12.7
Interface	Sum: SMA [F], Distri.: SMA [F]; Stainless steel connector, Per IEC 61169	
Finishing	Nickel plating, Per QQ-N-290	
Temperature	Operating: -55~+85°C; Storage: -55~+100°C	
Environmental	Optional: Per MIL-STD-202F (contact supplier for detail info.)	
Eng. Customized	N/A	

Note:

- Above Theoretical Loss 3dB
- VSWR ≤ 1.2 required for forward CW; Amp. & phase unbalance required for reversed input signals
- Unless otherwise specified, Decimal tolerance: x.±1; .x±0.5; .xx±0.1

### Outline Drawing



# Power Divider/Combiner

## Model P02N180265 Rev.D

18-26.5GHz 2-Way Power Divider/Combiner, Coaxial connector

### Typical Graph

Typical test environment: 25°C and 60%RH

