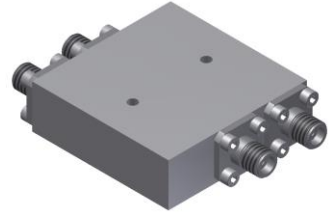


# 4-Port 180° Hybrid Coupler

## Model HN265400 Rev.B

26.5-40GHz 4-Port 3dB 180° Hybrid, Coaxial connector



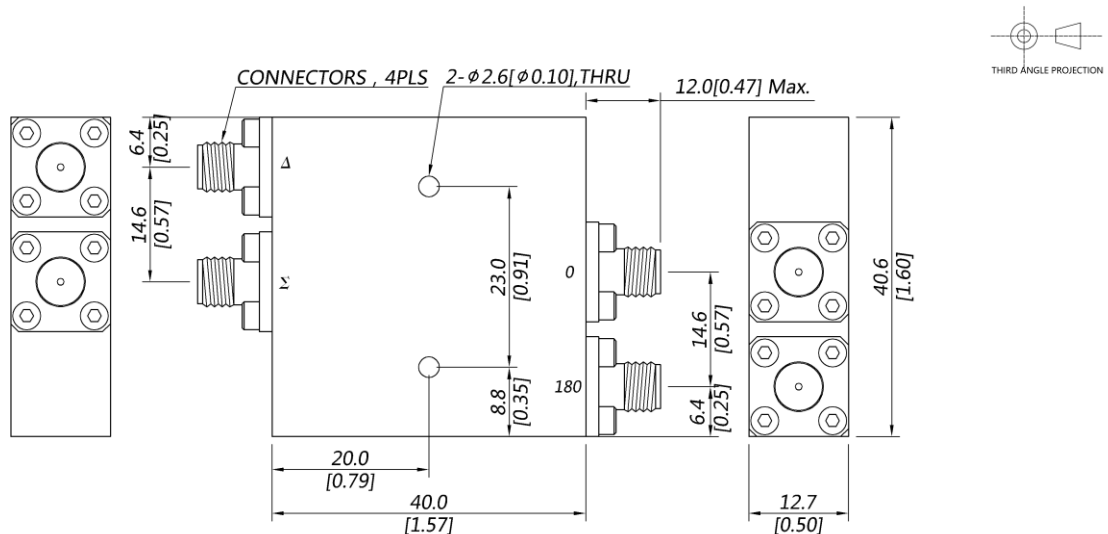
### Specifications

All specifications are subject to change without notice at any time

Frequency Range	GHz	26.5-40	
Nom. Phase	Deg. (Typ.)	180	
Ports VSWR	:1 (Max.)	1.7	
Insertion Loss <sup>1</sup>	dB(Max.)	2.9	
Amp. Unbalance	dB(Max.)	±1	
Phase Unbalance	Deg. (Max.)	±10	
Isolation	dB(Min.)	15	
Power <sup>2</sup>	W(Max.)	CW: 20; Peak: 3000	
Weight	g(Max.)	75	Dimension <sup>3</sup> mm (LxWxH) 40x40.6x12.7
Interface	Stainless steel connector; Input: 2.92mm [F], Output: 2.92mm [F]		
Finishing	Polyurethane paint		
Temperature	Operating: -55~+85°C; Storage: -55~+100°C		
Environmental	Per MIL-STD-202F, Method 107D, 204D, 213B (optional, contact supplier for detail info.)		
Eng. Customized	N/A		

- Note:
- Above Theoretical Loss 3dB
  - VSWR ≤ 1.2 required for CW
  - Unless otherwise specified, Decimal tolerance: x.±1; .x±0.5; .xx±0.1

### Outline Drawing



# 4-Port 180° Hybrid Coupler

## Model HN265400 Rev.B

26.5-40GHz 4-Port 3dB 180° Hybrid, Coaxial connector

### Typical Graph

Typical test temperature @25°C

