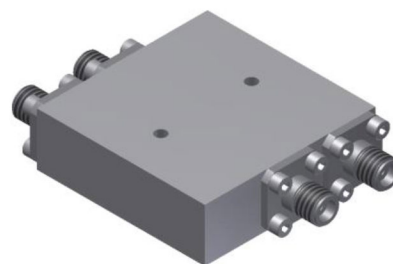


Frequency Range	GHz	<b>10-40</b>
Nominal Phase Bal.	Deg.(Typ.)	<b>180</b>
Ports VSWR	:1 (Max.)	<b>1.8</b>
Insertion Loss*	dB(Max.)	<b>3</b>
Amplitude Balance	dB(Max.)	<b>±1.2</b>
Phase Balance	Deg. (Max.)	<b>±12</b>
Isolation	dB(Min.)	<b>15</b>
CW Power	W(Typ.)	<b>20</b>



Input Connector Type	<b>2.92mm [F]</b>
Output Connector Type	<b>2.92mm [F]</b>
Weight g(Max.)	<b>75</b>
Dimension mm(Max.)	<b>40x40.6x12.7</b>
Peak Power KW(Max.)	<b>3</b>

**\* Above Theoretical 3dB**

## Features

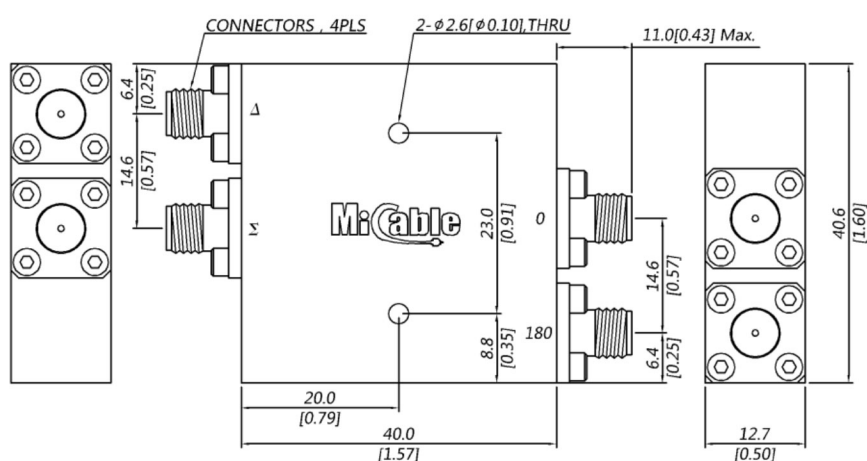
-Stainless steel precision coaxial connector, I.A.W. MIL-PRF-39012 and MIL-STD-348.

Nickel plating, I.A.W SAE-AMS-QQ-N-290.

## Environmental Performance

-Operating Temp.: -55--+85°C; Storage Temp.: -55--+100°C;

- Thermal Shock, Vibration, Shock Per MIL-STD-202F, Method 107D, 204D and 213B ;



Unit: Inch , Unless otherwise specified, .x ±0.05 .xx ±0.04 .xxx,±0.020

ALL SPECIFICATIONS ARE SUBJECT TO CHANGE WITHOUT NOTICE AT ANY TIME