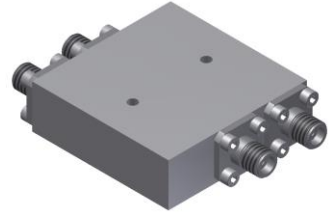


4-Port 180° Hybrid Coupler

Model HN060500 Rev.B

6-50GHz 4-Port 3dB 180° Hybrid, Coaxial connector



Specifications

All specifications are subject to change without notice at any time

Frequency Range	GHz	6-18	18-40	40-50
Nom. Phase	Deg. (Typ.)	180	180	180
Ports VSWR	:1 (Max.)	1.7	1.9	2
Insertion Loss ¹	dB(Max.)	1.7	3.2	3.8
Amp. Unbalance	dB(Max.)	±1.5	±1.5	±1.5
Phase Unbalance	Deg. (Max.)	±15	±15	±15
Isolation	dB(Min.)	15	13	12
Power ²	W(Max.)	CW: 20; Peak: 1000		
Weight	g(Max.)	75	Dimension ³ mm (LxWxH)	40.0x40.6x12.7
Interface	Stainless steel connector; Input: 2.4mm [F], Output: 2.4mm [F]			
Finishing	Nickel plating			
Temperature	Operating: -55~+85°C; Storage: -55~+100°C			
Environmental	Per MIL-STD-202F, Method 107D, 204D, 213B (optional, contact supplier for detail info.)			
Eng. Customized	N/A			

- Note:
- Above Theoretical Loss 3dB
 - VSWR ≤ 1.2 required for CW
 - Unless otherwise specified, Decimal tolerance: x.±1; .x±0.5; .xx±0.1

Outline Drawing

