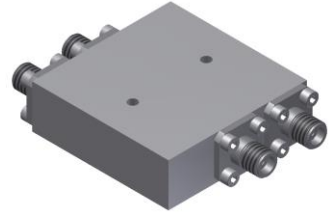


# 4-Port 180° Hybrid Coupler

## Model HN060400 Rev.B

6-40GHz 4-Port 3dB 180° Hybrid, Coaxial connector



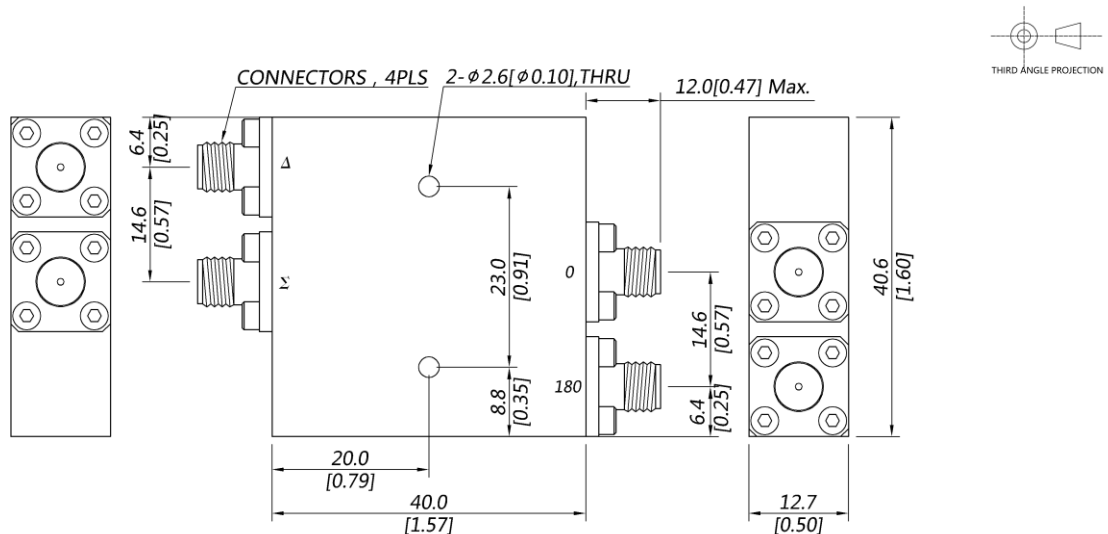
### Specifications

All specifications are subject to change without notice at any time

Frequency Range	GHz	6-18	18-26.5	26.5-40
Nom. Phase	Deg. (Typ.)	180	180	180
Ports VSWR	:1 (Max.)	1.6	1.7	1.8
Insertion Loss <sup>1</sup>	dB(Max.)	1.8	2.3	3
Amp. Unbalance	dB(Max.)	±1.2	±1.2	±1.2
Phase Unbalance	Deg. (Max.)	±12	±12	±12
Isolation	dB(Min.)	16	15	14
Power <sup>2</sup>	W(Max.)	CW: 20; Peak: 3000		
Weight	g(Max.)	75	Dimension <sup>3</sup> mm (LxWxH)	40.0x40.6x12.7
Interface	Stainless steel connector; Input: 2.92mm [F], Output: 2.92mm [F]			
Finishing	Polyurethane paint			
Temperature	Operating: -55~+85°C; Storage: -55~+100°C			
Environmental	Per MIL-STD-202F, Method 107D, 204D, 213B (optional, contact supplier for detail info.)			
Eng. Customized	N/A			

- Note:
- Above Theoretical Loss 3dB
  - VSWR ≤ 1.2 required for CW
  - Unless otherwise specified, Decimal tolerance: x.±1; .x±0.5; .xx±0.1

### Outline Drawing



# 4-Port 180° Hybrid Coupler

## Model HN060400 Rev.B

6-40GHz 4-Port 3dB 180° Hybrid, Coaxial connector

### Typical Graph

Typical test temperature @25°C

