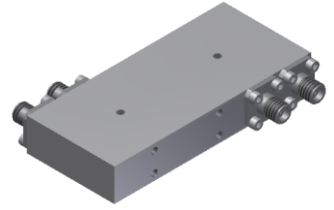


4-Port 180° Hybrid Coupler

Model HN020180 Rev.B

2-18GHz 4-Port 3dB 180° Hybrid, Coaxial connector



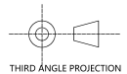
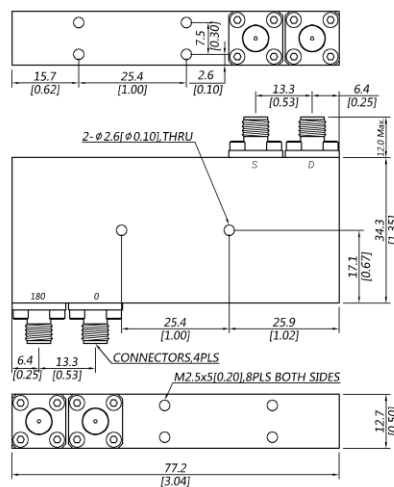
Specifications

All specifications are subject to change without notice at any time

Frequency Range	GHz	2-8	8-18
Nom. Phase	Deg. (Typ.)	180	180
Ports VSWR	:1 (Max.)	1.5	1.6
Insertion Loss ¹	dB(Max.)	1.5	2
Amp. Unbalance	dB(Max.)	±0.7	±0.7
Phase Unbalance	Deg. (Max.)	±9	±9
Isolation	dB(Min.)	17	16
Power ²	W(Max.)	CW: 30; Peak: 3000	
Weight	g(Max.)	110	Dimension ³ mm (LxWxH) 34.3x77.2x12.7
Interface	Stainless steel connector; Input: SMA [F], Output: SMA [F]		
Finishing	Alloy iridite		
Temperature	Operating: -55~+85°C; Storage: -55~+100°C		
Environmental	Per MIL-STD-202F, Method 107D, 204D, 213B (optional, contact supplier for detail info.)		
Eng. Customized	N/A		

- Note:
1. Above Theoretical Loss 3dB
 2. VSWR ≤ 1.2 required for CW
 3. Unless otherwise specified, Decimal tolerance: x.±1; .x±0.5; .xx±0.1

Outline Drawing



4-Port 180° Hybrid Coupler

Model HN020180 Rev.B

2-18GHz 4-Port 3dB 180° Hybrid, Coaxial connector

Typical Graph

Typical test temperature @25°C

