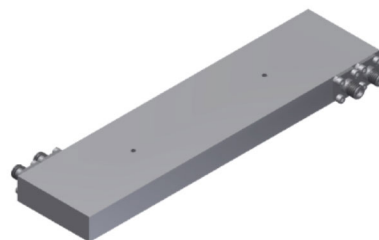


Frequency Range	GHz	0.76-12.4
Nominal Phase Bal.	Deg.(Typ.)	180
Ports VSWR	:1 (Max.)	1.6
Insertion Loss*	dB(Max.)	3.3
Amplitude Balance	dB(Max.)	±0.8
Phase Balance	Deg. (Max.)	±10
Isolation	dB(Min.)	17
CW Power	W(Typ.)	20



Input Connector Type	SMA [F]
Output Connector Type	SMA [F]
Weight g(Max.)	270
Dimension mm(Max.)	41.7x168.9x12.7
Peak Power KW(Max.)	3

* Above Theoretical 3dB

Features

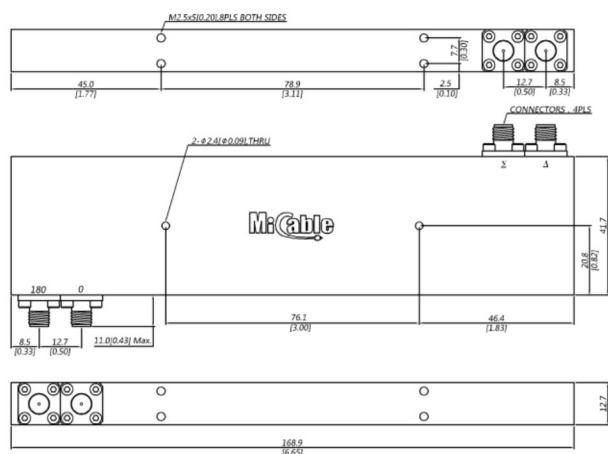
-Stainless steel precision coaxial connector, I.A.W. MIL-PRF-39012 and MIL-STD-348.

Nickel plating, I.A.W SAE-AMS-QQ-N-290.

Environmental Performance

-Operating Temp.: -55--+85°C; Storage Temp.: -55--+100°C;

- Thermal Shock, Vibration, Shock Per MIL-STD-202F, Method 107D, 204D and 213B ;



Unit: Inch , Unless otherwise specified, .x ±0.05 .xx ±0.04 .xxx,±0.020

ALL SPECIFICATIONS ARE SUBJECT TO CHANGE WITHOUT NOTICE AT ANY TIME