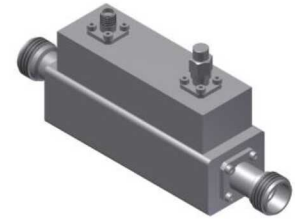


High Power Directional Coupler

Model D40H020180 Rev.A

2-18GHz 40dB Directional Coupler; Coaxial connector;



All specifications are subject to change without notice at any time

Electrical & Mechanical Specifications

Frequency Range	GHz	2-8	8-18
Main Line VSWR	:1 (Max.)	1.4	1.5
Coupling VSWR	:1 (Max.)	1.5	1.6
Insertion Loss ¹	dB(Max.)	0.4	0.6
Coupling	dB(Max.)	40±1	40±1
Flatness	dB(Max.)	±0.8	±0.8
Directivity	dB(Min.)	12	10
Power ²	W(Max.)	CW: 400; Peak: 3000	
Weight	g(Max.)	330	Dimension ³ mm(Max.) 86.7L×30W×43.4H
Interface	Stainless steel connector; Input: TYPE N[F], Thru.: TYPE N[F], Coup: SMA [F]		
Finishing	Nickel plating		
Temperature	Operating: -55--+85°C; Storage: -55--+100°C		
Environmental	Per MIL-STD-202F, Method 107D,204D,213B (optional, contact supplier for detail info.)		
Customized	N/A		

Note: 1. Theoretical coupling loss included 2. Power rating is for load VSWR better than 1.20:1
3. Unless otherwise specified, Decimal tolerance: 1 place±0.5 2 place±0.1

Outline Drawing

