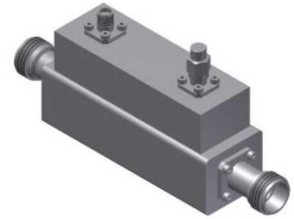


High Power Directional Coupler

Model D40H020080 Rev.A

2-8GHz 40dB Directional Coupler ; Coaxial connector;



All specifications are subject to change without notice at any time

Electrical & Mechanical Specifications

Frequency Range	GHz	2-8
Main Line VSWR	:1 (Max.)	1.4
Coupling VSWR	:1 (Max.)	1.4
Insertion Loss ¹	dB(Max.)	0.4
Coupling	dB(Max.)	40±0.8
Flatness	dB(Max.)	±0.7
Directivity	dB(Min.)	14
Power ²	W(Max.)	CW: 600; Peak: 3000
Weight	g(Max.)	330
	Dimension ³	mm(Max.)
		86.7L×30W×43.4H
Interface	Stainless steel connector; Input: TYPE N[F], Thru.: TYPE N[F], Coup: SMA [F]	
Finishing	Nickel plating	
Temperature	Operating: -55--+85°C; Storage: -55--+100°C	
Environmental	Per MIL-STD-202F, Method 107D,204D,213B (optional, contact supplier for detail info.)	
Customized	N/A	

Note: 1. Theoretical coupling loss included 2.Power rating is for load VSWR better than 1.20:1
3.Unless otherwise specified, Decimal tolerance: 1 place±0.5 2 place±0.1

Outline Drawing

