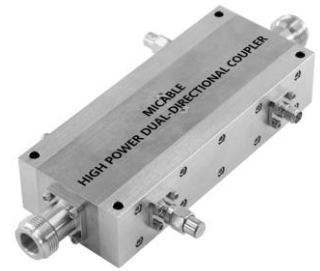


High Power Dual-Directional Coupler

Model D4008HB010080 Rev.A

1-8GHz 40dB 400Watt Dual-Directional Coupler, Coaxial connector



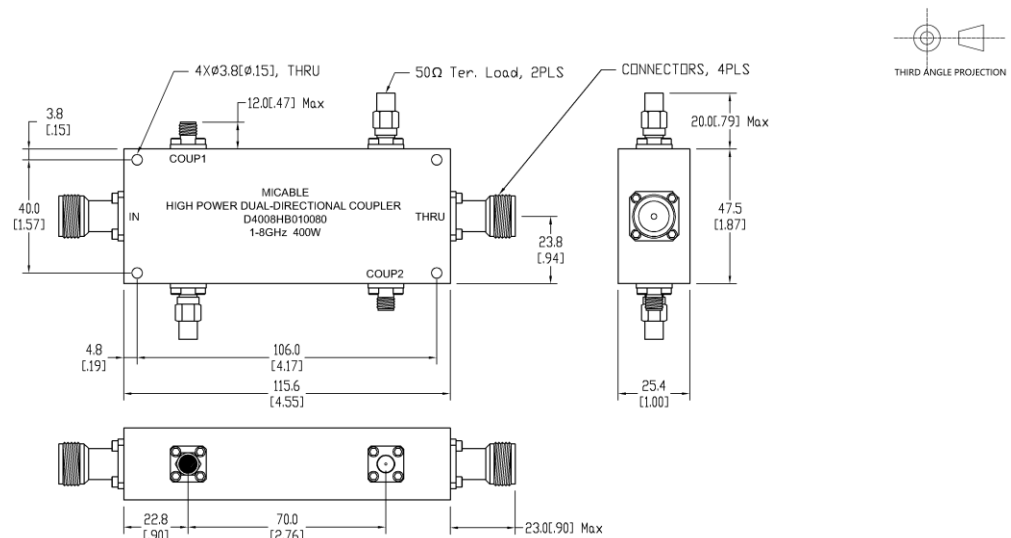
Specifications

All specifications are subject to change without notice at any time

Frequency Range	GHz	1-8
Main Line VSWR	:1 (Max.)	1.4
Coupling VSWR	:1 (Max.)	1.4
Insertion Loss ¹	dB(Max.)	0.4
Coupling	dB(Max.)	40±0.8
Flatness	dB(Max.)	±1.1
Directivity	dB(Min.)	14
Power ²	W(Max.)	CW: 400; Peak: 3000
Weight	g(Max.)	440
Dimension ³	mm (LxWxH)	115.6x25.4x47.5
Interface	Main line: TYPE N [F], Coup.: SMA [F]; Stainless steel connector, Per IEC 61169	
Finishing	Nickel plating, Per QQ-N-290	
Temperature	Operating: -55~+85°C; Storage: -55~+100°C	
Environmental	Optional: Per MIL-STD-202F (contact supplier for detail info.)	
Eng. Customized	N/A	

- Note:
1. Theoretical coupling loss included
 2. VSWR ≤ 1.2 required for CW
 3. Unless otherwise specified, Decimal tolerance: x.±1; .x±0.5; .xx±0.1

Outline Drawing



High Power Dual-Directional Coupler

Model D4008HB010080 Rev.A

1-8GHz 40dB 400Watt Dual-Directional Coupler, Coaxial connector

Typical Graph

Typical test environment: 25°C and 60%RH

