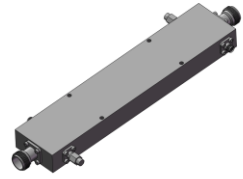


High Power Dual-Directional Coupler

Model D4005HB003060 Rev.A

0.3-6GHz 40dB 250Watt Dual-Directional Coupler



Specifications

All specifications are subject to change without notice at any time

Frequency Range	GHz	0.3-6
Main Line VSWR	:1 (Max.)	1.4
Coupling VSWR	:1 (Max.)	1.4
Insertion Loss ¹	dB(Max.)	0.7
Coupling	dB(Max.)	40±1
Flatness	dB(Max.)	±1.6
Directivity	dB(Min.)	15
Power ²	W(Max.)	CW: 250; Peak: 3000
Weight	g(Max.)	780
Dimension ³	mm (LxWxH)	211.9x20.0x45.0
Interface	Stainless steel connector; Input: TYPE N [F], Thru.: TYPE N [F], Coup.: SMA [F]	
Finishing	Nickel plating	
Temperature	Operating: -55~+85°C; Storage: -55~+100°C	
Environmental	Per MIL-STD-202F, Method 107D, 204D, 213B (optional, contact supplier for detail info.)	
Eng. Customized	N/A	

- Note:
1. Theoretical coupling loss included
 2. VSWR ≤ 1.2 required for CW
 3. Unless otherwise specified, Decimal tolerance: x±1; .x±0.5; .xx±0.1

Outline Drawing

