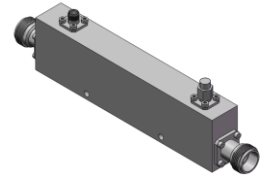


# High Power Directional Coupler

## Model D4005H007080 Rev.A

0.7-8GHz 40dB 250Watt Directional Coupler



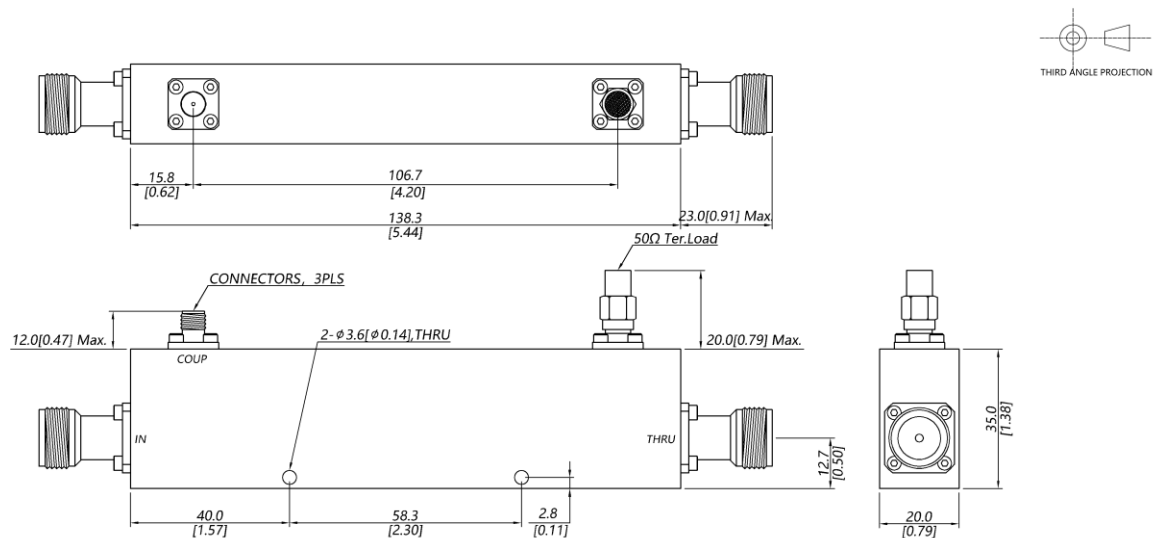
### Specifications

All specifications are subject to change without notice at any time

|                             |   |                     |
|-----------------------------|---|---------------------|
| Frequency Range             | GHz   | 0.7-8               |
| Main Line VSWR              | :1 (Max.)   | 1.4                 |
| Coupling VSWR               | :1 (Max.)   | 1.4                 |
| Insertion Loss <sup>1</sup> | dB(Max.)  | 0.5                 |
| Coupling                    | dB(Max.)  | 40±0.8              |
| Flatness                    | dB(Max.)  | ±1                  |
| Directivity                 | dB(Min.)  | 14                  |
| Power <sup>2</sup>          | W(Max.)   | CW: 250; Peak: 3000 |
| Weight                      | g(Max.)   | 310                 |
| Dimension <sup>3</sup>      | mm (LxWxH)  | 138.3x20.0x35.0     |
| Interface                   | Stainless steel connector; Input: TYPE N [F], Thru.: TYPE N [F], Coup.: SMA [F]         |                     |
| Finishing                   | Nickel plating  |                     |
| Temperature                 | Operating: -55~+85°C; Storage: -55~+100°C   |                     |
| Environmental               | Per MIL-STD-202F, Method 107D, 204D, 213B (optional, contact supplier for detail info.) |                     |
| Eng. Customized             | N/A   |                     |

- Note:
1. Theoretical coupling loss included
  2. VSWR ≤ 1.2 required for CW
  3. Unless otherwise specified, Decimal tolerance: x±1; .x±0.5; .xx±0.1

### Outline Drawing



# High Power Directional Coupler

## Model D4005H007080 Rev.A

0.7-8GHz 40dB 250Watt Directional Coupler

### Typical Graph

Typical test temperature @25°C

