

High Power Dual-Directional Coupler

Model D4002HB060180 Rev.A

6-18GHz 40dB 120Watt Dual-Directional Coupler, Coaxial connector



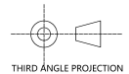
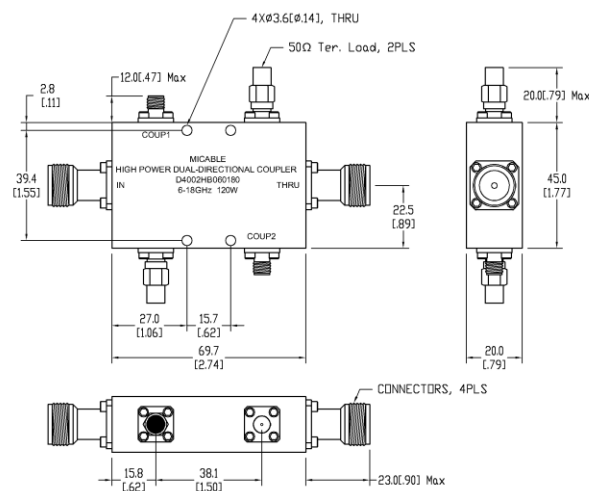
All specifications are subject to change without notice at any time

Specifications

Frequency Range	GHz	6-18	
Main Line VSWR	:1 (Max.)	1.5	
Coupling VSWR	:1 (Max.)	1.6	
Insertion Loss ¹	dB(Max.)	0.5	
Coupling	dB(Max.)	40±1	
Flatness	dB(Max.)	±0.9	
Directivity	dB(Min.)	10	
Power ²	W(Max.)	CW: 120; Peak: 3000	
Weight	g(Max.)	230	Dimension ³ mm (LxWxH) 69.7x20.0x45.0
Interface	Main line: TYPE N [F], Coup.: SMA [F]; Stainless steel connector, Per IEC 61169		
Finishing	Nickel plating, Per QQ-N-290		
Temperature	Operating: -55~+85°C; Storage: -55~+100°C		
Environmental	Optional: Per MIL-STD-202F (contact supplier for detail info.)		
Eng. Customized	N/A		

- Note:
1. Theoretical coupling loss included
 2. VSWR ≤ 1.2 required for CW
 3. Unless otherwise specified, Decimal tolerance: x.±1; .x±0.5; .xx±0.1

Outline Drawing



High Power Dual-Directional Coupler

Model D4002HB060180 Rev.A

6-18GHz 40dB 120Watt Dual-Directional Coupler, Coaxial connector

Typical Graph

Typical test environment: 25°C and 60%RH

