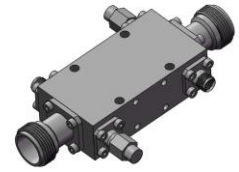


High Power Dual-Directional Coupler

Model D4002HB020060 Rev.A

2-6GHz 40dB 120Watt Dual-Directional Coupler



All specifications are subject to change without notice at any time

Specifications

| | | |
|-----------------------------|---|---------------------|
| Frequency Range | GHz | 2-6 |
| Main Line VSWR | :1 (Max.) | 1.3 |
| Coupling VSWR | :1 (Max.) | 1.3 |
| Insertion Loss ¹ | dB(Max.) | 0.4 |
| Coupling | dB(Max.) | 40±0.8 |
| Flatness | dB(Max.) | ±0.7 |
| Directivity | dB(Min.) | 18 |
| Power ² | W(Max.) | CW: 120; Peak: 3000 |
| Weight | g(Max.) | TBD |
| | Dimension ³ | mm (LxWxH) |
| | | 57.2x17.5x30.0 |
| Interface | Stainless steel connector; Input: TYPE N [F], Thru.: TYPE N [F], Coup.: SMA [F] | |
| Finishing | Nickel plating | |
| Temperature | Operating: -55~+85°C; Storage: -55~+100°C | |
| Environmental | Per MIL-STD-202F, Method 107D, 204D, 213B (optional, contact supplier for detail info.) | |
| Eng. Customized | N/A | |

- Note:
1. Theoretical coupling loss included
 2. VSWR ≤ 1.2 required for CW
 3. Unless otherwise specified, Decimal tolerance: x.±1; .x±0.5; .xx±0.1

Outline Drawing

