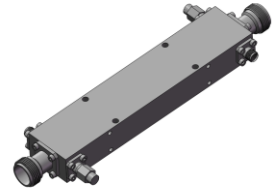


High Power Dual-Directional Coupler

Model D4002HB004080 Rev.A

0.4-8GHz 40dB 120Watt Dual-Directional Coupler



Specifications

All specifications are subject to change without notice at any time

Frequency Range	GHz	0.4-8	
Main Line VSWR	:1 (Max.)	1.3	
Coupling VSWR	:1 (Max.)	1.3	
Insertion Loss ¹	dB(Max.)	0.8	
Coupling	dB(Max.)	40±1	
Flatness	dB(Max.)	±1	
Directivity	dB(Min.)	18	
Power ²	W(Max.)	CW: 120; Peak: 3000	
Weight	g(Max.)	TBD	Dimension ³ mm (LxWxH) 139.7x17.5x30.0
Interface	Stainless steel connector; Input: TYPE N [F], Thru.: TYPE N [F], Coup.: SMA [F]		
Finishing	Nickel plating		
Temperature	Operating: -55~+85°C; Storage: -55~+100°C		
Environmental	Per MIL-STD-202F, Method 107D, 204D, 213B (optional, contact supplier for detail info.)		
Eng. Customized	N/A		

- Note:
1. Theoretical coupling loss included
 2. VSWR ≤ 1.2 required for CW
 3. Unless otherwise specified, Decimal tolerance: x±1; .x±0.5; .xx±0.1

Outline Drawing

