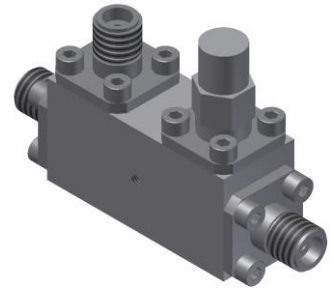


# Directional Coupler

## Model D30N060400 Rev.C

6-40GHz 30dB Directional Coupler, Coaxial connector



### Specifications

All specifications are subject to change without notice at any time

Frequency Range	GHz	6-18	18-26.5	26.5-40
Main Line VSWR	:1 (Max.)	1.5	1.6	1.7
Coupling VSWR	:1 (Max.)	1.5	1.6	1.7
Insertion Loss <sup>1</sup>	dB(Max.)	0.6	0.8	1
Coupling	dB(Max.)	30±0.7	30±0.7	30±0.7
Flatness	dB(Max.)	±0.9	±0.9	±0.9
Directivity	dB(Min.)	14	12	10
Power <sup>2</sup>	W(Max.)	CW: 20; Peak: 3000		
Weight	g(Max.)	40	Dimension <sup>3</sup> mm (LxWxH)	31.8x12.7x15.9
Interface	Stainless steel connector; Input: 2.92mm [F], Thru.: 2.92mm [F], Coup.: 2.92mm [F]			
Finishing	Nickel plating			
Temperature	Operating: -55~+85°C; Storage: -55~+100°C			
Environmental	Per MIL-STD-202F, Method 107D, 204D, 213B (optional, contact supplier for detail info.)			
Eng. Customized	N/A			

- Note:
1. Theoretical coupling loss included
  2. VSWR ≤ 1.2 required for CW
  3. Unless otherwise specified, Decimal tolerance: x±1; .x±0.5; .xx±0.1

### Outline Drawing



# Directional Coupler

## Model D30N060400 Rev.C

6-40GHz 30dB Directional Coupler, Coaxial connector

### Typical Graph

Typical test temperature @25°C

