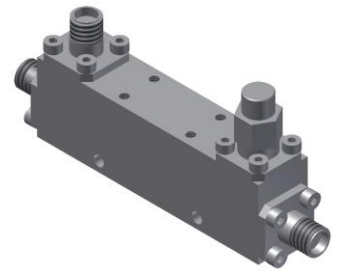


Directional Coupler

Model D30N020400 Rev.B

2-40GHz 30dB Directional Coupler, Coaxial connector



Specifications

All specifications are subject to change without notice at any time

Frequency Range	GHz	2-8	8-18	18-26.5	26.5-40
Main Line VSWR	:1 (Max.)	1.4	1.5	1.6	1.7
Coupling VSWR	:1 (Max.)	1.4	1.5	1.6	1.7
Insertion Loss ¹	dB(Max.)	0.6	0.9	1.1	1.4
Coupling	dB(Max.)	30±0.8	30±0.8	30±0.8	30±0.8
Flatness	dB(Max.)	±1.1	±1.1	±1.1	±1.1
Directivity	dB(Min.)	16	13	11	10
Power ²	W(Max.)	CW: 20; Peak: 3000			
Weight	g(Max.)	55	Dimension ³ mm (LxWxH)	57.2x12.7x17.8	
Interface	Stainless steel connector; Input: 2.92mm [F], Thru.: 2.92mm [F], Coup.: 2.92mm [F]				
Finishing	Nickel plating				
Temperature	Operating: -55~+85°C; Storage: -55~+100°C				
Environmental	Per MIL-STD-202F, Method 107D, 204D, 213B (optional, contact supplier for detail info.)				
Eng. Customized	N/A				

- Note:
1. Theoretical coupling loss included
 2. VSWR ≤ 1.2 required for CW
 3. Unless otherwise specified, Decimal tolerance: x.±1; .x±0.5; .xx±0.1

Outline Drawing

